

## AKL-LED · STZ5 SERIES

AKL-LED•STZ5 series LED Operation shadowless lamp is suitable for various operation needs, is the modern ideal surgical lighting equipment operating room and purify the operating room.

### Features

- Adopt imported LED cold light source.
- Nano coating of heat sink has created an excellent heat dissipation effect.
- Digital way to regulate the brightness of LED.
- The removable handle , to facilitate cleaning and sanitation.
- Fine adjustment spot diameter.
- Titanium alloy large arm, no welding, import the spring arm to lift up and down, light and flexible.
- Import control voltage switch power supply, make the working voltage stable forever.
- Color temperature is adjustable, controlled human R9 function.
- With functions of minimally invasive lighting.
- LED shadowless lamp life expectancy long (50000 h).



●AKL-LED · STZ5



●AKL-LED · STZ5/ STZ5

## AKL-LED · STZ5



### R9 Index – Portraying Red

More specifically, we focused on maximizing the R9 value to be R9=93, a specific color rendering index for deep, saturated shades of red, critical to the surgical environment. Your eyes will see every detail in exposed tissue, in every subtle shade of red, with clarity, comfort and focus.

### Keeps You Cool&Wound Care

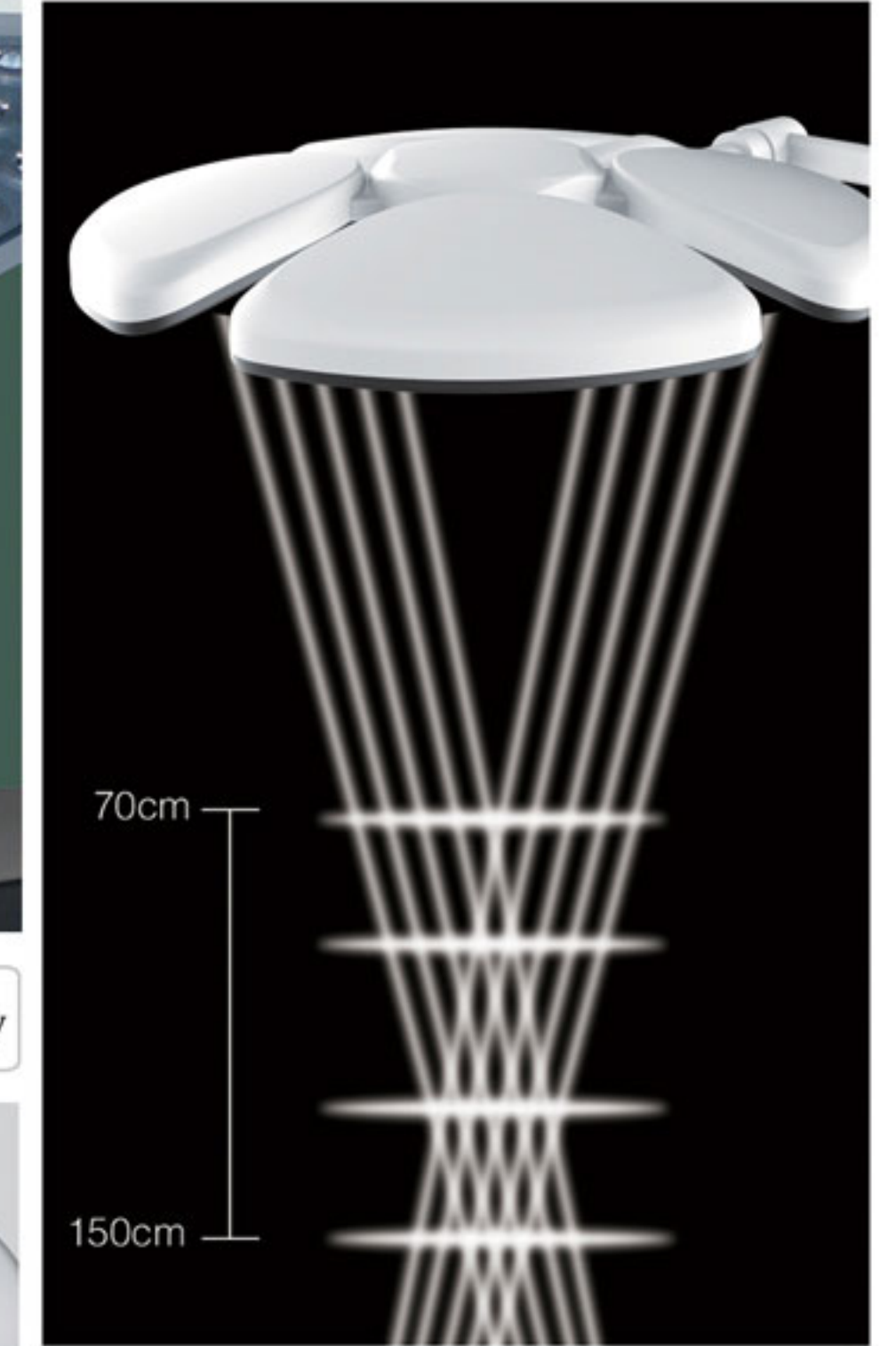
The LED cool light without infrared together with our Nano coating heat filter the exceptionally low heat dissipation (3.3mW/m<sup>2</sup>lx), which avoids the problem of heating the area around the surgeon's head, and prevents desiccation of exposed tissue, and is good for the quickly recover of the wound.



Lighting is suitable for minimally invasive surgery



Unique appearance design

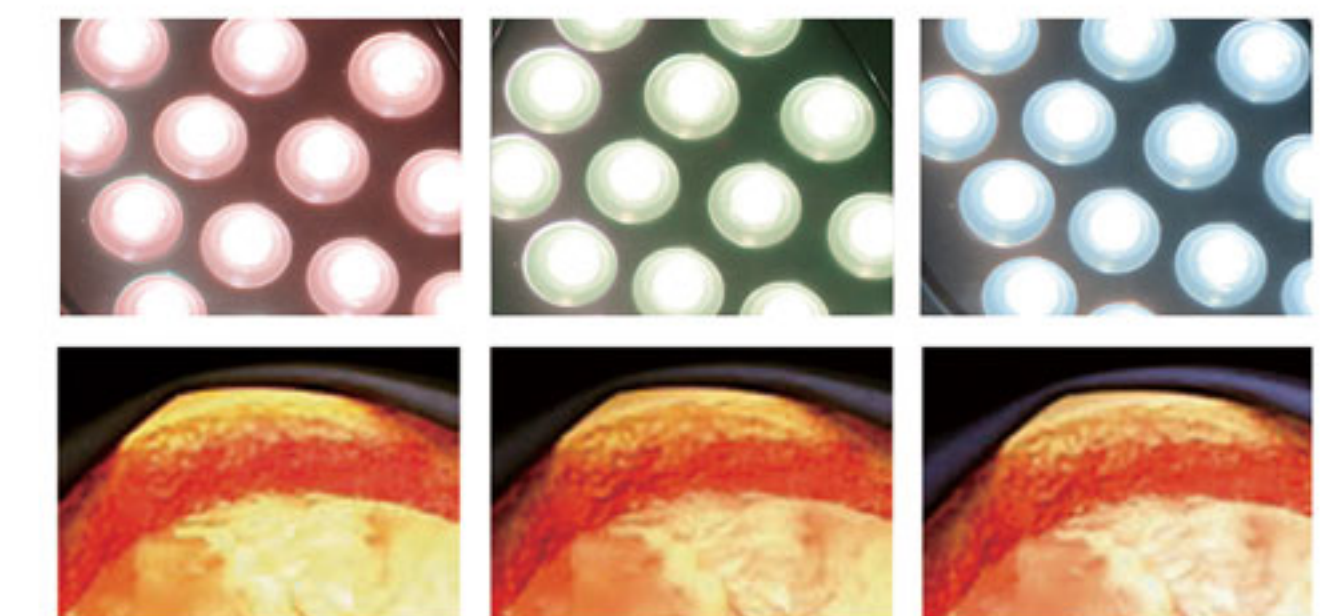


### Depth lighting

Each lamp bead containing independent secondary optical lens, with a small Angle, high uniformity, and the characteristics of higher light efficiency, to achieve the perfect output of every small unit. It is helpful for the wound of according to different structure and shadow effect provide an optimal beam depth. This is of extreme importance to open small and deep surgery.

### Excellent Shadowless Capacity

The well-proportioned LED bulbs deliver a 160,000lux of pure, white light, a bright, consistent spot on surgical field regardless of obstruction.



### Changing the Light Color

You have the possibility to choose the optimum OR light as preferred or according to the tissue type and the wound field texture. this function can facilitate the clear distinction between various types of tissue and the perception of true tissue colours. Additionally, adjustable colour selection can help with concentration of errors due to fatigue.

# AKL-LED · STZ4 SERIES

AKL-LED.STZ4 series shadowless operation lamp are suitable for the requirements of various operation conditions and it is ideal operating lighting equipment for modern operation rooms and clean operation rooms.

## Features >

- Imported LED cold light source is adopted , with the ultrathin optical lens.
- Digital means are adopted for stepless regulation of LED brightness.
- Light field size can be adjusted by the handle.
- The removable handle sheath can be disinfected .
- The service life of LED shadowless lamp is long (50,000h).
- Color temp can be adjusted in three steps.
- The imported switch power supply is adopted to control the voltage, making the work voltage permanently stable.
- The no welding titanium alloy arm, Imported spring arm make sure the lamp head adjusted easily and freely.



Ultrathin optical lens and Nano coating heat filter make a great shadowless and cold light effect.



●AKL-LED · STZ4/ STZ4

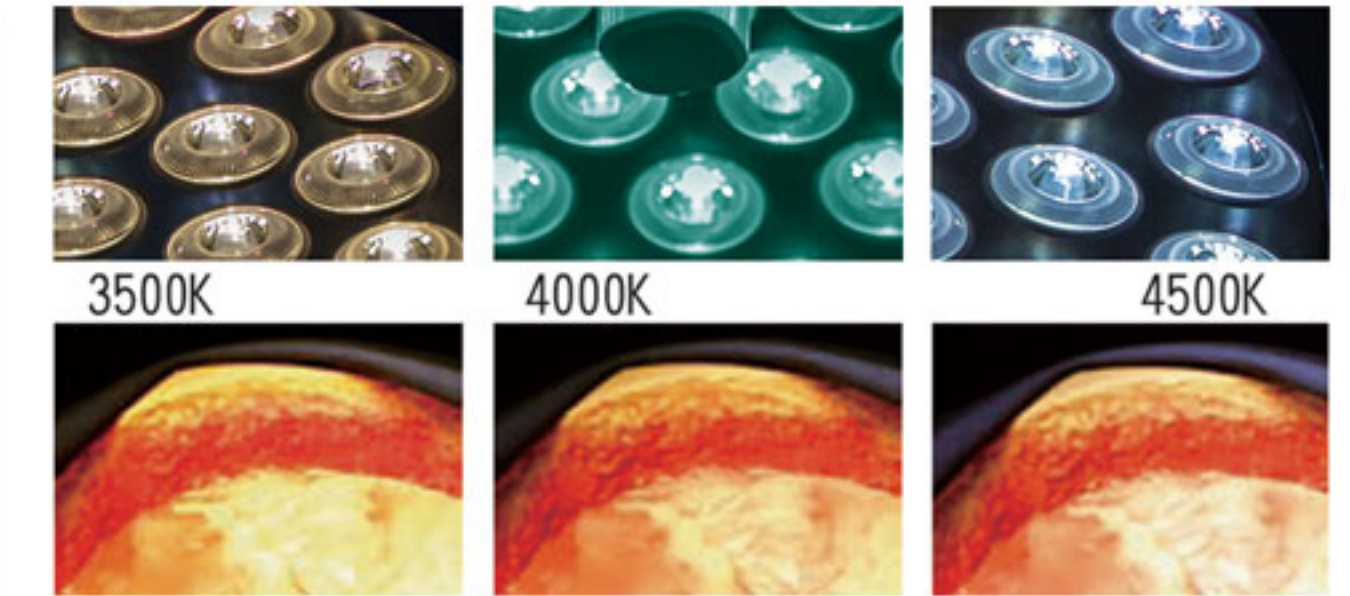


●AKL-LED · STZ4

# AKL-LED · STZ4



Depth lighting.  
Focusing light can reach 1000mm.



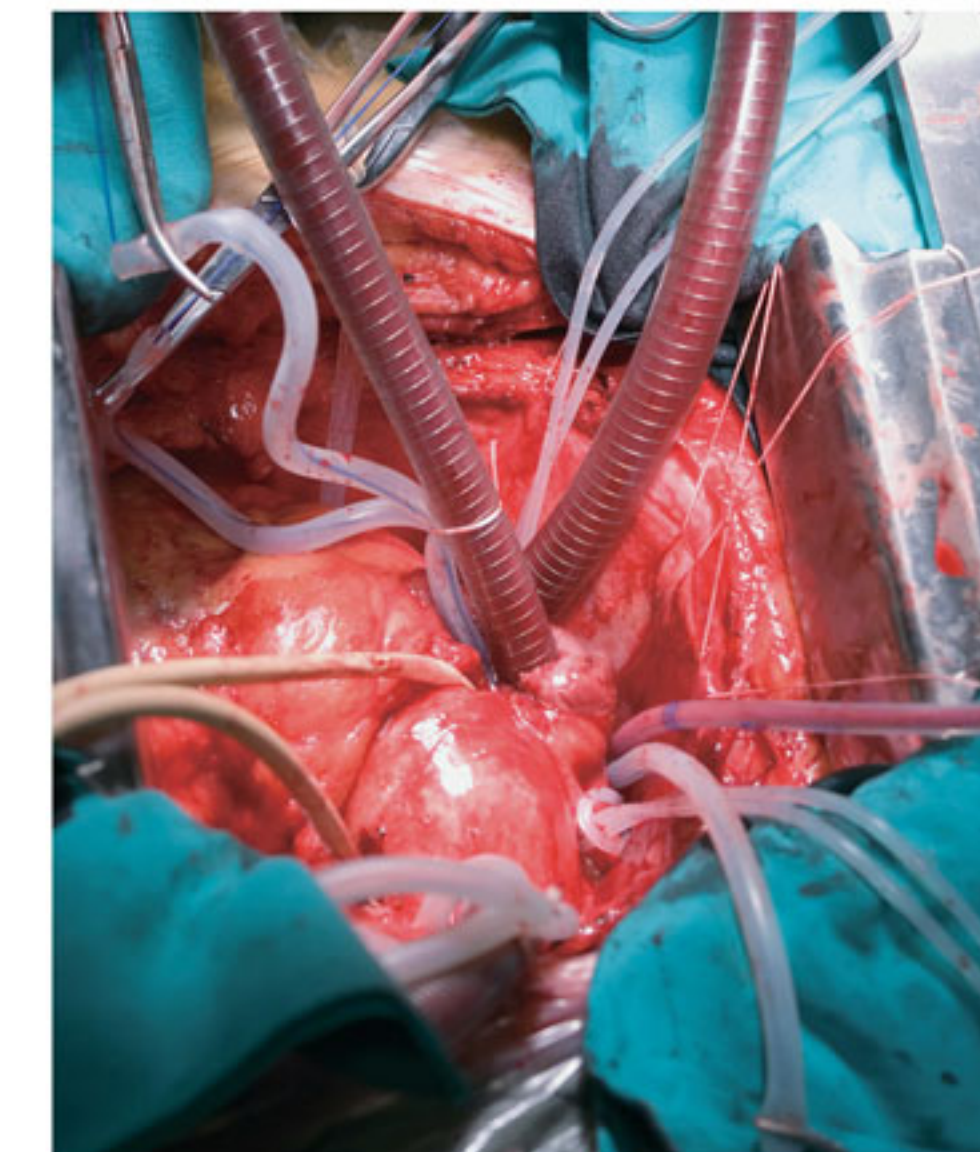
## Changing the Light Color

You have the possibility to choose the optimum OR light as preferred or according to the tissue type and the wound field texture. This function can facilitate the clear distinction between various types of tissue and the perception of true tissue colours. Additionally, adjustable colour selection can help with concentration of errors due to fatigue.



## Excellent Shadowless Capacity

The well-proportioned LED bulbs deliver a 160,000lux of pure, white light, a bright, consistent spot on surgical field regardless of obstruction.



## High CRI

High CRI, It may enhance the chromatic aberration between blood, other body tissues and organs, and it thus helps the operating doctor to have a clearer view.



For light field diameter



For light illumination  
Switch on/off  
For color temperature

“SMILE” design control panel illumination, color temp can be adjusted

## AKL-LED · SZ4 SERIES

AKL-LED.SZ4 series shadowless operation lamp are suitable for the requirements of various operation conditions and it is ideal operating lighting equipment for modern operation rooms and clean operation rooms.

### Features

- Imported LED cold light source is adopted , with the ultrathin optical lens.
- Digital means are adopted for stepless regulation of LED brightness.
- Light field size can be adjusted by the handle.
- The removable handle sheath can be disinfected .
- The service life of LED shadowless lamp is long (50,000h).
- The imported switch power supply is adopted to control the voltage, making the work voltage permanently stable.
- The no welding titanium alloy arm,Imported spring arm make sure the lamp head adjusted easily and freely.



●AKL-LED · SZ4



●AKL-LED · SZ4/ SZ4

## AKL-LED · SZ4



### Keeps You Cool&Wound Care

The LED cool light without infrared together with our Nano coating heat filter the exceptionally low heat dissipation (3.3mW/m<sup>2</sup>lx) , which avoids the problem of heating the area around the surgeon's head, and prevents desiccation of exposed tissue, and is good for the quickly recover of the wound.



Ultrathin optical lens and Nano coating heat filter make a great shadowless and cold light effect.



### Excellent Shadowless Capacity

The well-proportioned LED bulbs deliver a 160,000-lux of pure, white light,a bright, consistent spot on surgical field regardless of obstruction.



For light field diameter



For light illumination Switch on/off

## AKL-LED · DT SERIES

AKL-LED-DT61 shadowless operation lamp is suitable for the requirements of various operation conditions and it is ideal operating lighting equipment for modern operation rooms and clean operation rooms.

### Features >

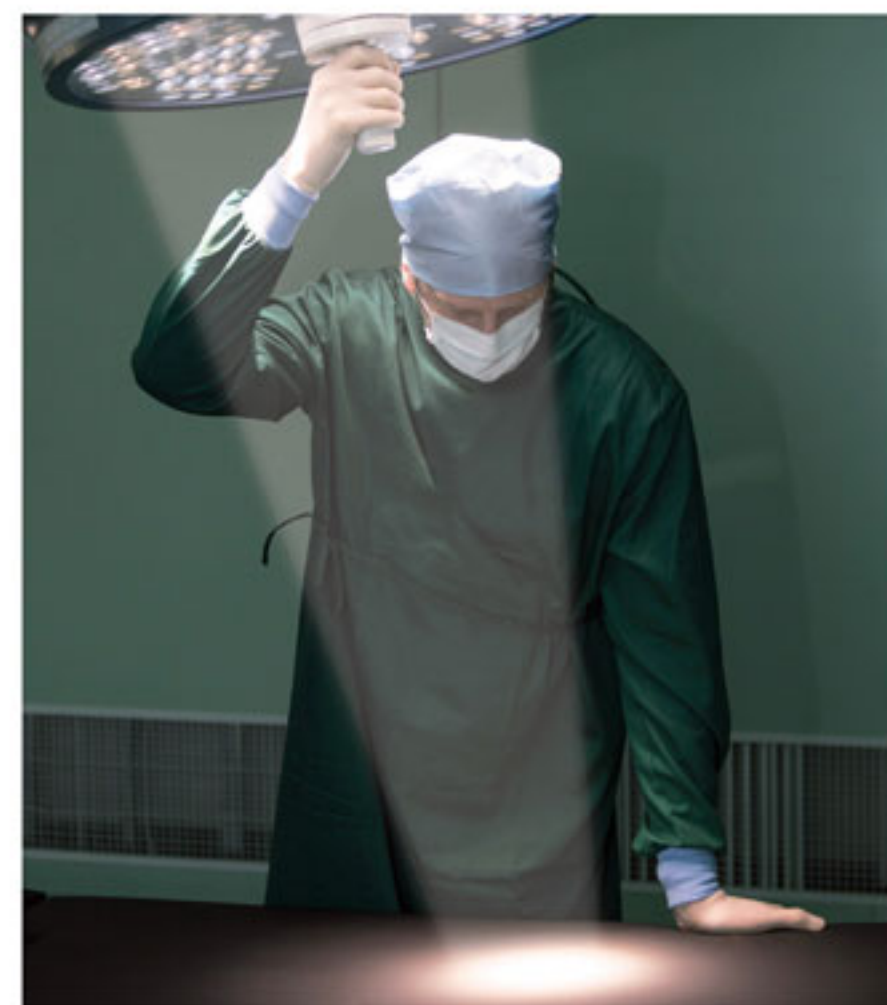
- An imported LED cold light source is adopted.
- With electric focusing function.
- Nano coating and die-cast aluminum enclosure creating a streamlined excellent cooling effect.
- Digital means are adopted for stepless regulation of LED brightness.
- The removable handle sheath can be disinfected.
- The no welding titanium alloy arm, Imported spring arm is lifted and lowered easily and freely.
- The imported switch power supply is adopted to control the voltage, making the work voltage permanently stable.
- Adjustable color temperature, R9 features that enhance the red color rendering index.
- The service life of LED shadowless lamp is long (50,000h).



●AKL-LED · DT61



●AKL-LED · DT61/DT61



### Excellent Shadowless Capacity

The well-proportioned LED bulbs deliver a 160,000lux of pure, white light, a bright, consistent spot on surgical field regardless of obstruction.



For color temperature  
For light field diameter  
For light illumination  
Switch on/off



Patented design

## AKL-LED · D SERIES

AKL-LED-D shadowless operation lamp is suitable for the requirements of various operation conditions and it is ideal operating lighting equipment for modern operation rooms and clean operation rooms.

### Features >

- An imported LED cold light source is adopted.
- Digital means are adopted for stepless regulation of LED brightness.
- With electric focusing function.
- The removable handle sheath can be disinfected.
- Imported spring arm.
- The service life of LED shadowless lamp is long (50,000h).
- The imported switch power supply is adopted to control the voltage, making the work voltage permanently stable.
- The no welding titanium alloy arm and the streamline-designed lamp cap better meet the design requirements of modern clean laminar flow operation rooms.



●AKL-LED · D61



●AKL-LED · D61/D61



### Patented design

Patented design appearance, forming a diecast aluminum, with high heat dissipation, thus extending the service life of LED lights, imported LED source with an average life of 50,000 hours.



For light illumination  
Switch on/off  
For light field diameter

## AKL-LED · STZ5, AKL-LED · STZ4, AKL-LED · SZ4

### Specification

MODE	AKL-LED·STZ5/STZ5	AKL-LED·STZ4/STZ4	AKL-LED·SZ4/SZ4
Diameter of lighthouse(cm)	Combined type	Combined type	Combined type
Illumination at 1m(lux)	80000-160000 / 80000-160000	80000-160000 / 80000-160000	40000-100000 / 40000-100000
Light field diameter at 1m (cm)	10-28	10-28	10-28
D10(mm)	180±40/180±40	180±40/180±40	180±40/180±40
Diameter of spot D50(mm)	110±35/110±35	110±35/110±35	110±35/110±35
L1+L2 Depth of illumination(cm)	150	150	150
Color rendering index(Ra)	100≥Ra≥85	100≥Ra≥85	100≥Ra≥85
Optional color temperature(K)	( 3500-4500 ) ±500	( 3500-4500 ) ±500	4500±500
Number of LED bulbs	80/80	72/72	32/32
Average bulb life (hours)	50000	50000	50000
Heat-to-light ratio(mW/m <sup>2</sup> lx)	< 6	< 6	< 6
Working distance(cm)	70-140	70-140	70-140
Power supply	100-240V 50/60HZ	100-240V 50/60HZ	100-240V 50/60HZ
Input power (VA)	180	180	120
Ceiling height for installation(cm)	270-320	270-320	270-320

## AKL-LED · DT61, AKL-LED · D61

### Specification

MODE	AKL-LED·DT61/DT61	AKL-LED·D61/D61
Diameter of lighthouse(cm)	61/61	61/61
Illumination at 1m(lux)	80000~140000	80000~140000
Light field diameter at 1m (cm)	10-28	10-28
D10(mm)	180±15	180±15
Diameter of spot D50(mm)	100±15	100±15
L1+L2 Depth of illumination(cm)	150	150
Color rendering index(Ra)	95	95
Red color index (R9)	-	-
Optional color temperature(K)	3500,4000,4500	4500±500
Number of LED bulbs	72/72	72 / 72
Average bulb life (hours)	50,000	50,000
Heat-to-light ratio(mW/m <sup>2</sup> lx)	3.3	3.3
Working distance(cm)	70-150	70-150
Power supply	100-240 V,50/60HZ	100-240 V,50/60HZ
Input power (VA)	240	240
Ceiling height for installation(cm)	270-320	270-320

## AKL-LED · MSTZ4 SERIES, AKL-LED · MD61

AKL-LED·MSTZ4, AKL-LED·MD61 shadowless operation lamp are suitable for the requirements of various operation conditions and it is ideal operating lighting equipment for modern operation rooms and clean operation rooms.

### Features

- Imported LED cold light source is adopted, with the ultrathin optical lens.
- Digital means are adopted for stepless regulation of LED brightness.
- Light field size can be adjusted by the handle.
- Removable handle sheath can be disinfected.
- Service life of LED shadowless lamp is long (50,000h).
- Color temperature can be adjusted in three steps.
- Imported switch power supply is adopted to control the voltage, making the work voltage permanently stable.
- No welding titanium alloy arm, imported spring arm make sure the lamp head adjusted easily and freely.

### Specification

MODE	AKL-LED·MSTZ4	AKL-LED·MD61
Diameter of lighthouse(cm)	Combined type	Combined type
Illumination at 1m(lux)	80000-160000	80000-160000
Light field diameter at 1m (cm)	10-28	10-28
D10(mm)	180±40	180±40
Diameter of spot D50(mm)	110±35	110±35
Color rendering index(Ra)	100≥Ra≥85	100≥Ra≥85
Color temperature(K)	(3500-4500)±500	(3500-4500)±500
Number of LED bulbs	72	72
Average bulb life (hours)	50000	50000
Heat-to-light ratio(mW/m <sup>2</sup> lx)	< 6	< 6
Working distance(cm)	70-140	70-140
Input power(VA)	90	90
Ceiling height for installation(cm)	270-320	270-320



●AKL-LED · MSTZ4

●AKL-LED · MSTZ4 (AC/DC)

●AKL-LED · MD61 (AC/DC)

## AKL-LED · MSZ4 SERIES

AKL-LED-MSZ4 series shadowless operation lamp are suitable for the requirements of various operation conditions and it is ideal operating lighting equipment for modern operation rooms and clean operation rooms.

### Features >

- Imported LED cold light source is adopted , with the ultrathin optical lens.
- Digital means are adopted for stepless regulation of LED brightness.
- Light field size can be adjusted by the handle.
- Removable handle sheath can be disinfected .
- Service life of LED shadowless lamp is long (50,000h).
- Color temperature can be adjusted in three steps.
- Imported switch power supply is adopted to control the voltage, making the work voltage permanently stable.
- No welding titanium alloy arm, Imported spring arm make sure the lamp head adjusted easily and freely.

### Specification >

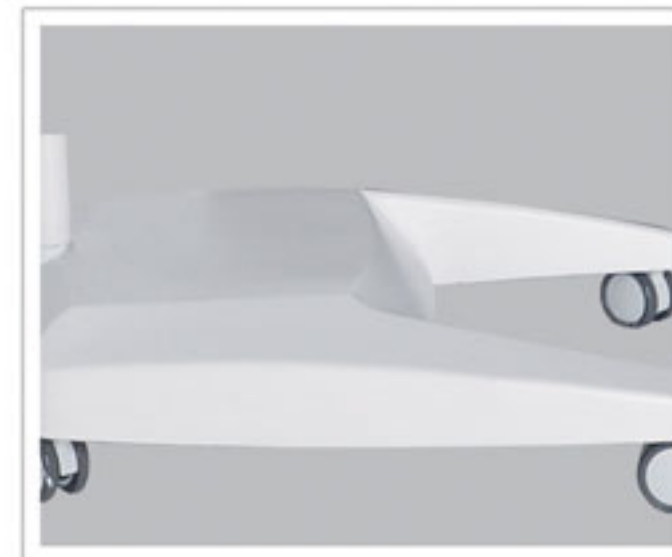
MODE	AKL-LED-MSZ4
Diameter of lighthouse(cm)	Combined type
Illumination at 1m(lux)	40000-100000
Light field diameter at 1m (cm)	10-28
D10(mm)	180±40
Diameter of spot D50(mm)	110±35
L1+L2 Depth of illumination(cm)	150
Color rendering index(Ra)	100≥Ra≥85
Color temperature(K)	4500±500
Number of LED bulbs	32
Average bulb life (hours)	50000
Heat-to-light ratio(mW/m <sup>2</sup> lx)	< 6
Working distance(cm)	70-140
Input power (VA)	60
Ceiling height for installation(cm)	270-320



●AKL-LED · MSZ4



●AKL-LED · MSZ4 (AC/DC)



## AKL01L.II LED

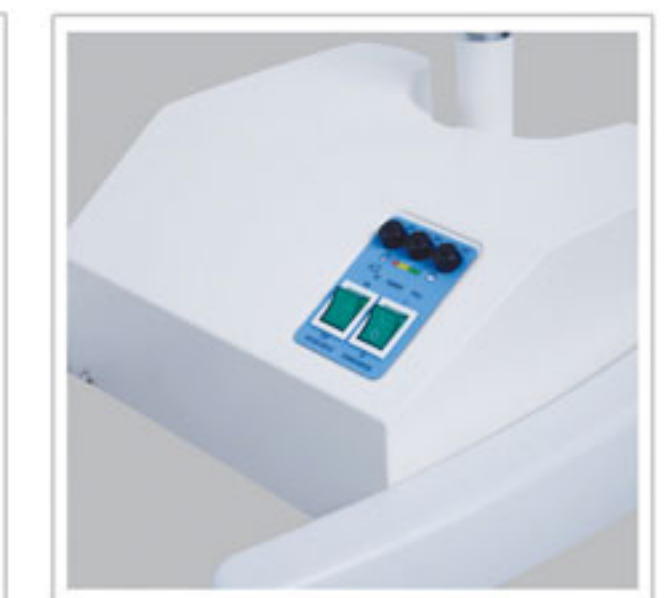
AKL01L.II LED Suitable for ENT, urology, gynecology examination and outpatient surgery half auxiliary lighting.

### Features >

- An imported LED cold light source is adopted as operation lighting. As a genuine cold light source.
- The LED shadowless lamp is pure-DC power supplied, without any strobe or harmonic.
- The service life of LED shadowless lamp is long (50,000 h).
- LED has high luminous efficiency and it is impact-resistant and strong to resist crumbling, without mercury contamination. The light it sends contains no infra-red or ultraviolet radiation pollution.
- The unique design of the spring arm.

### Specification >

MODE	AKL01L.II LED
Illumination (lux)	≥60000
Color Temperature (k)	4500±500
Input power(VA)	20
CRI	100≥Ra≥85
Tilt left and right	160°
Tilt front and back	190°
Spring arm adjusted	≥600



●AKL01L.III LED



●AKL01L.II LED



●AKL01L.II LED(AC/DC)



## AKL01L.II LED-I

This light is working for gynecology, obstetrics, gynecology, ENT examination and general surgical lighting.

### Features >

- Imported LED cold light source is adopted as operation lighting. As a genuine cold light source.
- Streamline design, beautiful looking.
- The lamp can be flexibly regulated 180 degrees.
- battery working (optional).

### Specification >

MODE	AKL01L.II LED-I
Illumination (lux)	≥30000
Color rendering index(Ra)	≥85%
Color Temperature (k)	4500±500
Left / right	180°
Front /back	180°
Height adjustment distance(mm)	≥400
Input power(VA)	20±10%



●AKL01L.II LED-I



●AKL01L.II LED-I ( AC/DC )



## Operation lamp with digital HD camera system



AKL-LED.STZ4/STZ4 with camera system

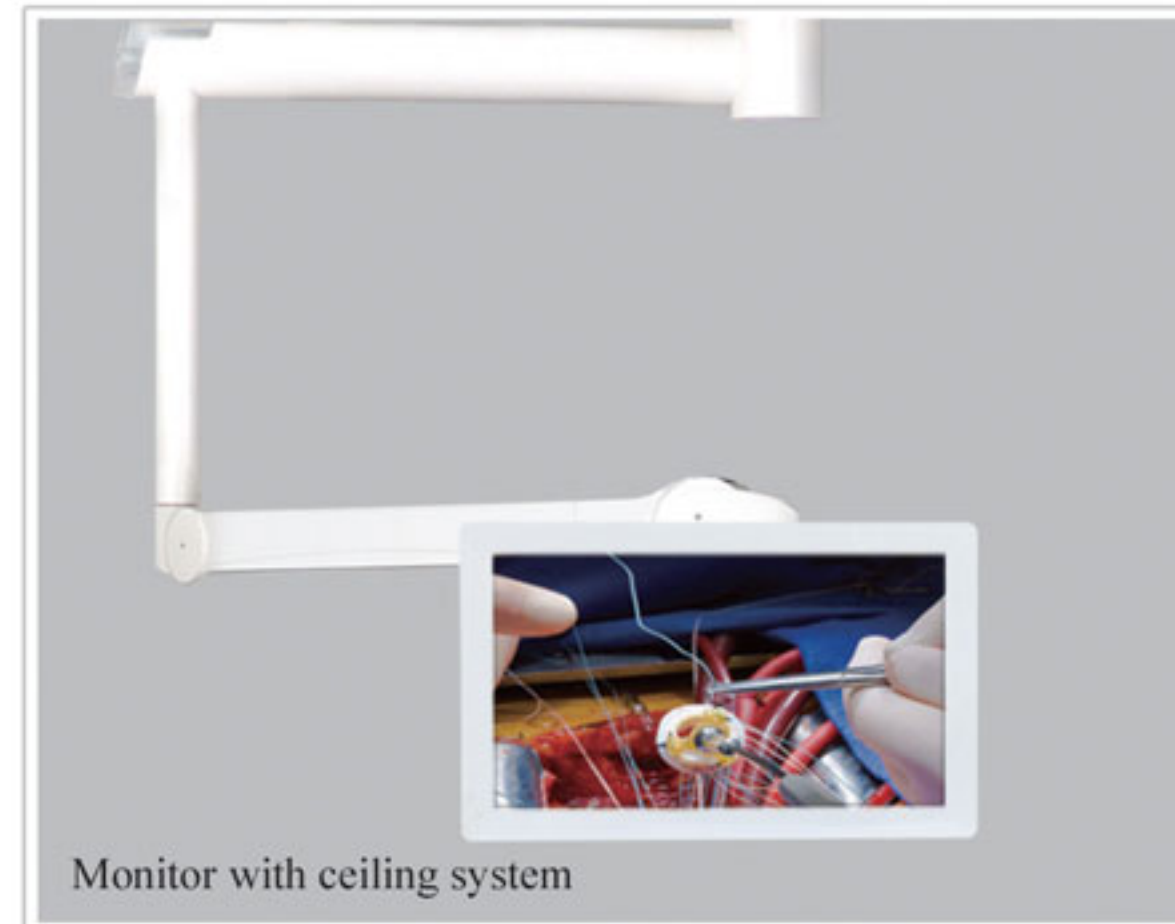


AKL700/700-III with camera system

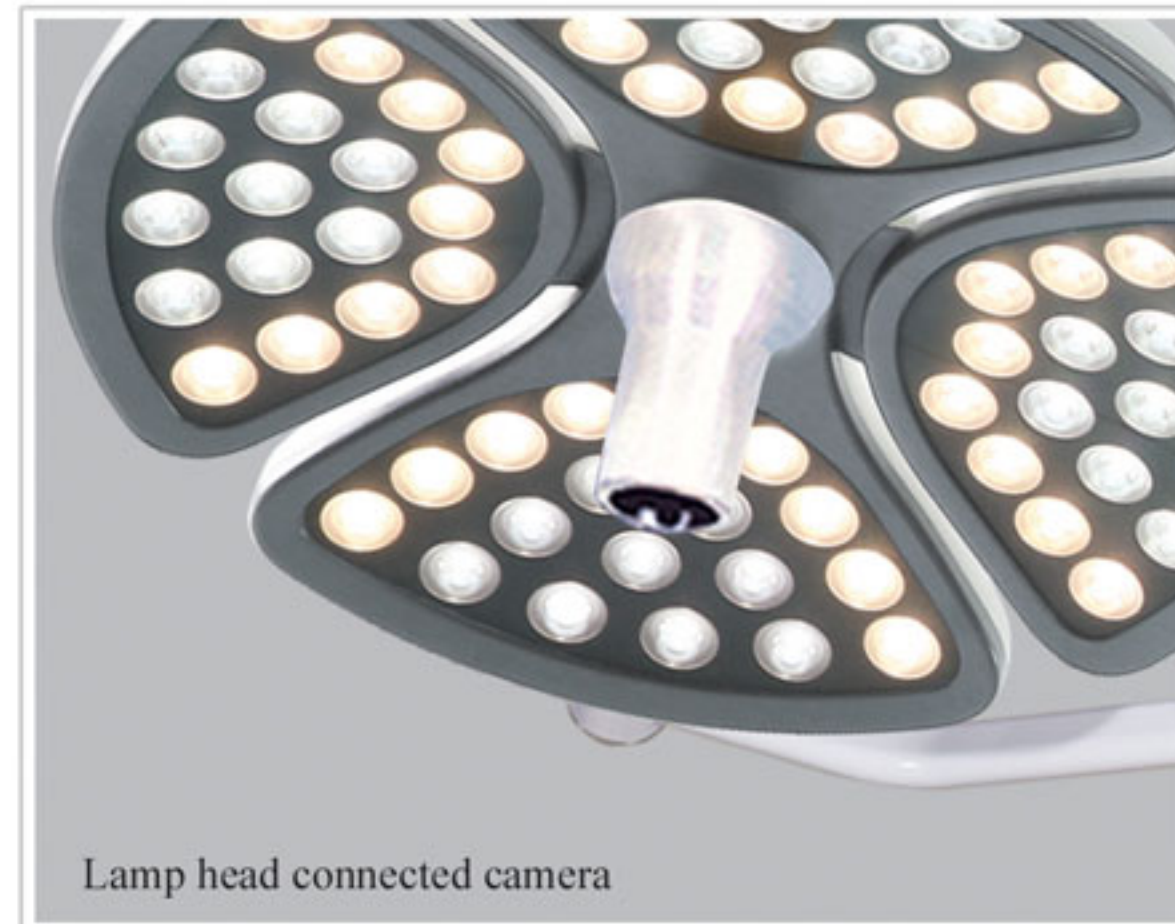


AKL-LED-STZ5/STZ5 with independent camera system

## Optional Details:



Monitor with ceiling system



Lamp head connected camera



Panorama camera



Recording storage system

## Specification

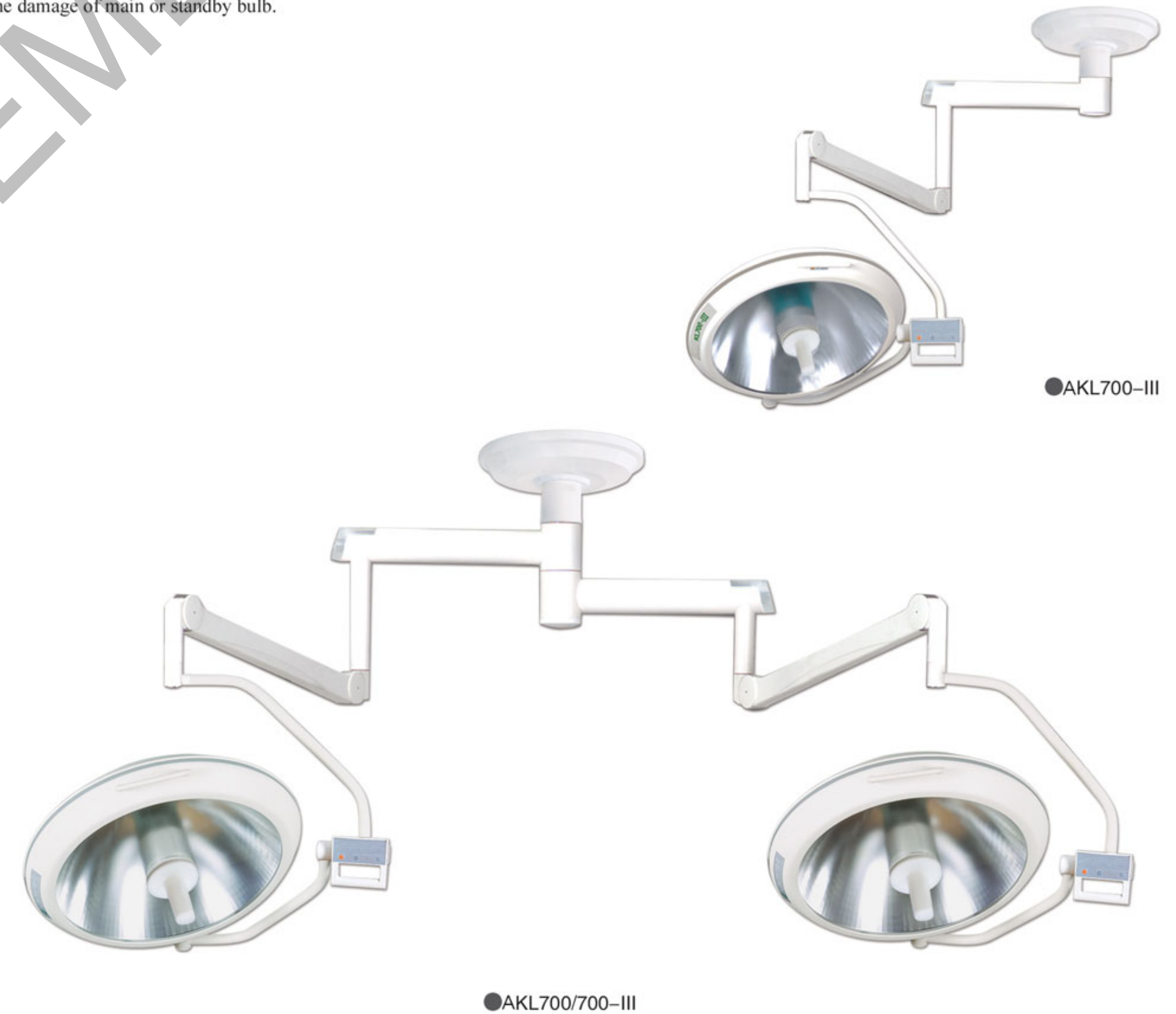
MODE	1080P HD CAMERA	MODE	HD DVR
Image Sensor	1 / 2.8 "Cmos	Operating System	Embedded Linux Operating System
Signal System	Digital: 1080p	System Resources	Multi-channel real-time video, multi-channel real-time playback, USB backup
Resolution	2,380,000 pixels	Operating interface	Interface 16 true color graphical, mouse support
Aspect ratio	16: 9	Image encoding standard	H.264
SNR	> 50dB	video standard	1080P @ 30fps
optical zoom	10x	playback image quality	1080P
Digital zoom	12x	video input	HD-SDI
Focal length f	f = 3.8 mm to 38.0 mm	Video output	1 VGA, 1 HDMI,
The minimum working distance of maximum aperture	0 mm (wide end) to 800 mm (tele end)	Grab function	Support JPEG capture function
Sensitive illumination color	F1.8 to F3.4	Recording mode	Manual recording, dynamic monitoring recording, timer recording
Auto Focus	0.35 lux	Recordings saved	local hard disk
Image freeze	Yes	Communication	a standard 485 connector
Contrast enhancement	Yes	USB	2 USB connector ports
white balance	Automatic and manual	Internal hard drive	support two SATA hard disk interface
Video signal output	HD (High Definition): HD-SDI	Power supply	220V ± 10% 50Hz ± 2%
communication protocol	RS-485	Power	<15W (without hard drive)
		Operating temperature	0 ~ +55 °C

## AKL700、500 SERIES

AKL700、500 shadowless operation lamp is suitable for the requirements of various operation conditions and it is ideal operating lighting equipment for modern operation rooms and clean operation rooms.

### Features

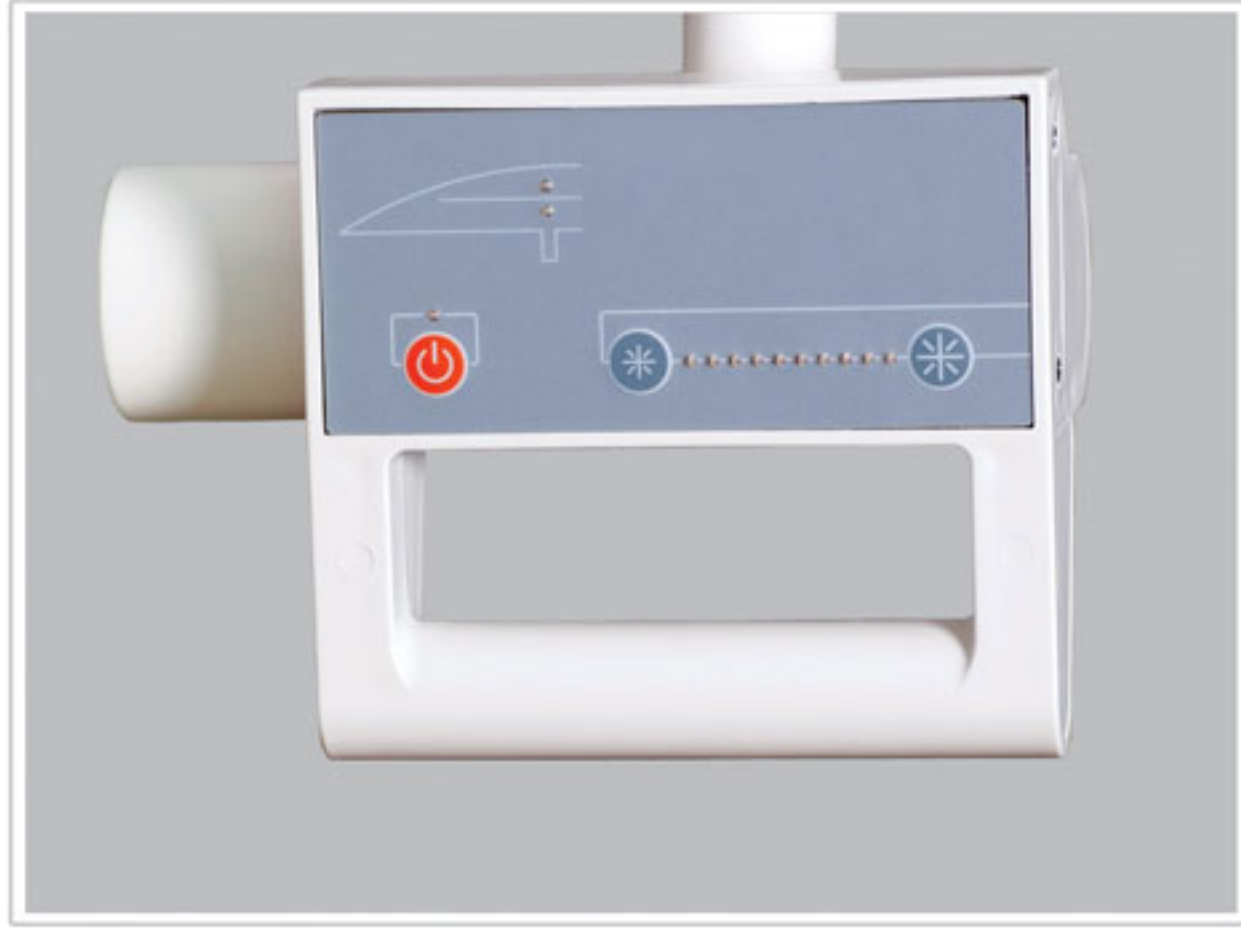
- The no welding titanium alloy main arm is adopted, so that the appearance is aesthetic and the rotation is more flexible and convenient.
- The removable handle sheath can be disinfected at the high temperature of 135°C.
- The depolished panel made of imported material makes the light rays softer.
- The imported switch power supply is adopted to control the voltage, making the work voltage permanently stable.
- The special radiation filter reducing the heat to the minimum level.
- The multi-flake retroreflector made of imported aluminum sheet has the features of no coating film and never fading.
- Imported lamp receptacle, Tungsten halogen bulbs of international brand are adopted with the average service more than 1500 hours.
- Light adjustment circuit adopts CPU control, enabling increase or decrease of illumination and boasting brightness memory.
- One lamp holder with two bulbs enables automatic operation of the standby bulb in 1/2 second when the main bulb malfunctions, and it has indicators for the damage of main or standby bulb.



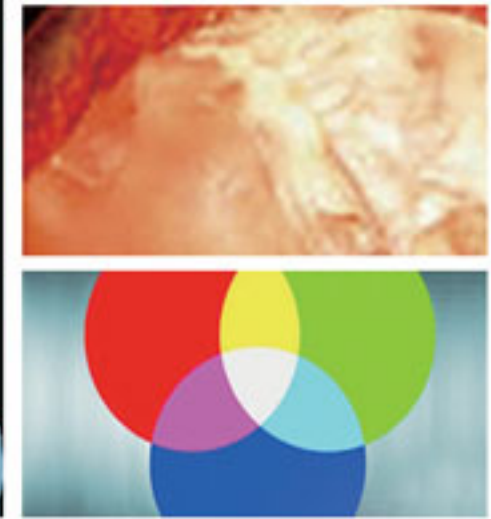
●AKL700-III

●AKL700/700-III

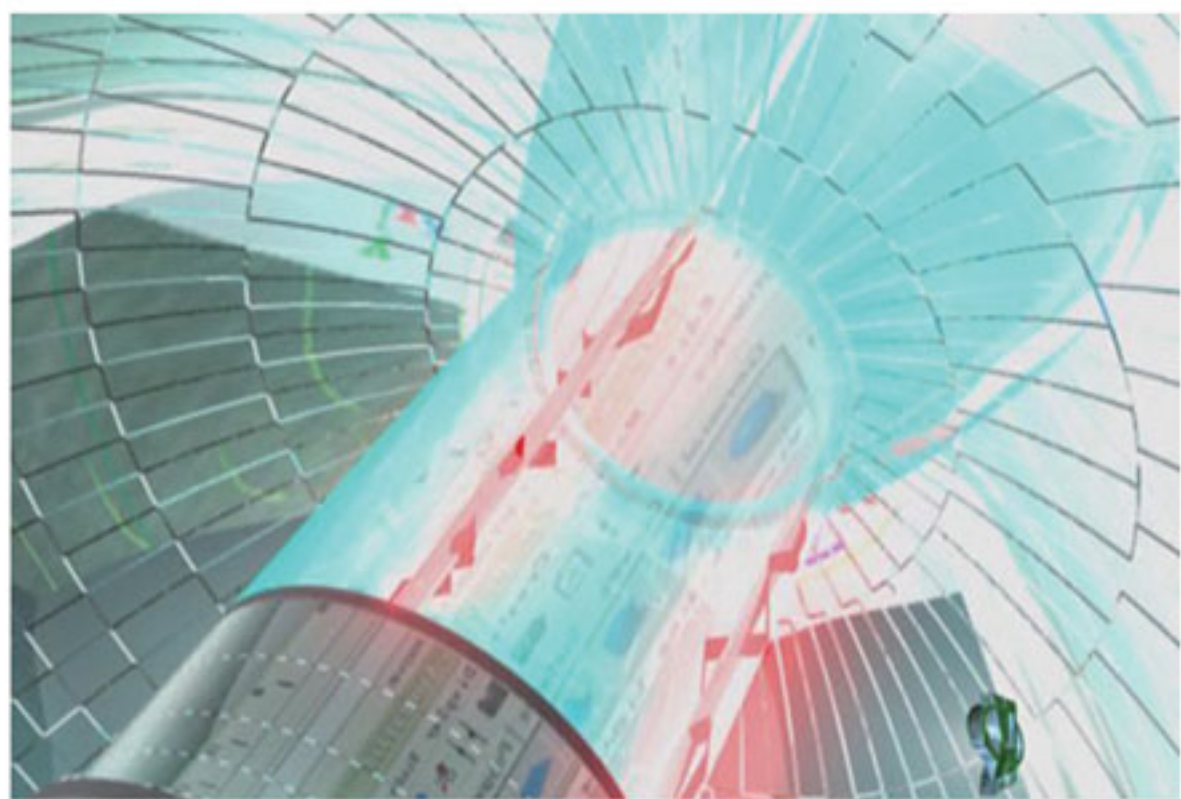




Perfect color temperature  
Based on Trichromatic Theory, the light is closer to natural light, which is good for medical workers to distinguish the colors of vascular tissue, nerve endings and so on.



Illination in depth  
It adopts lamp bulb imported from Germany and provides the best beam depth, which is particularly important for deep operation with small-incision.



Conductive system  
Conductive system adopts imported heat-resisting material, thus promising the working life of shadowless lamp.



The function of filtering system  
Adopting the US blue cold light coating technology, the optical filter could effectively filter ultraviolet rays from the spectrum.



●AKL700/500-III



●AKL500/500-III

●AKL500-III

## AKL700-III、AKL700/700-III

### Specification >

MODE	AKL700-III	AKL700/700-III
Illumination (lux)	160000≥Ee≥80000	160000≥Ee≥80000 / 160000≥Ee≥80000
Color Temperature (K)	4500±500	4500±500
Color rendering index	100≥Ra≥85	100≥Ra≥85
Diameter of Spot (cm)	10-28	10-28
Depth of light beam (mm)	≥700	≥700
Brightness level adjustment	CPU light-dimmer	CPU light-dimmer
The value of the total irradiance (service range for temperature rise≤10℃)	< 6mW/m²lx	< 6mW/m²lx
Total irradiance ( Temperature rise on the head of patient under surgical operation≤2℃)	≤600W/m²	≤600W/m²
Diameter of lamp holder (mm)	700	700/700
Shift of major and stand by lamps	Automatic	Automatic
Bulb power W(24V)	150	150/150
Power supply (AC)	220±20% 50Hz	220±20% 50Hz
Input power (VA)	200+10%	400+10%
Minimum height for installation ( mm )	2700~3200	2800~3200

## AKL700/500-III、AKL500-III、AKL500/500-III

### Specification >

MODE	AKL700/500-III	AKL500-III	AKL500/500-III
Illumination (lux)	160000≥Ee≥80000 120000≥Ee≥60000	120000≥Ee≥60000	120000≥Ee≥60000 120000≥Ee≥60000
Color Temperature (K)	4500±500	4500±500	4500±500
Color rendering index	100≥Ra≥85	100≥Ra≥85	100≥Ra≥85
Diameter of Spot (cm)	10-28	10-28	10-28
Depth of light beam (mm)	≥700	≥700	≥700
Brightness level adjustment	CPU light-dimmer	CPU light-dimmer	CPU light-dimmer
The value of the total irradiance (service range for temperature rise≤10℃)	< 6mW/m²lx	< 6mW/m²lx	< 6mW/m²lx
Total irradiance ( Temperature rise on the head of patient under surgical operation≤2℃)	≤600W/m²	≤600W/m²	≤600W/m²
Diameter of lamp holder (mm)	700/500	500	500/500
Shift of major and stand by lamps	Automatic	Automatic	Automatic
Bulb power W(24V)	150/150	150	150/150
Power supply (AC)	220±20% 50Hz	220±20% 50Hz	220±20% 50Hz
Input power (VA)	400+10%	200+10%	400+10%
Minimum height for installation ( mm )	2800~3200	2700~3200	2800~3200

## AKL600 SERIES

AKL600 series shadowless operation lamp is suitable for the requirements of various operation conditions and it is ideal operating lighting equipment for modern operation rooms and clean operation rooms.

### Features >

- The no welding titanium alloy main arm is adopted, so that the appearance is aesthetic and the rotation is more flexible and convenient.
- The removable handle sheath can be disinfected at the high temperature of 135℃.
- The depolished panel made of imported material makes the light rays softer.
- The imported switch power supply is adopted to control the voltage, making the work voltage permanently stable.
- The special radiation filter reducing the heat to the minimum level.
- The multi-flake retroreflector made of imported aluminum sheet has the features of no coating film and never fading.
- Imported lamp receptacle, Tungsten halogen bulbs of international brand are adopted with the average service more than 1500 hours.
- Light adjustment circuit adopts CPU control, enabling increase or decrease of illumination and boasting brightness memory.
- One lamp holder with two bulbs enables automatic operation of the standby bulb in 1/2 second when the main bulb malfunctions, and it has indicators for the damage of main or standby bulb.



●AKL600/600-II



## AKL600-I, AKL600/600-I

AKL600-I, AKL600/600-I shadowless operation lamp is suitable for the requirements of various operation conditions and it is ideal operating lighting equipment for modern operation rooms and clean operation rooms.

### Features

- Light adjustment circuit adopts SCR adjustment.
- The removable handle sheath can be disinfected at the high temperature of 135 °C.
- The retroreflector made of imported aluminum sheet has the features of no coating film and never fading.
- The special radiation filter reducing the heat to the minimum level.
- The rippled panel made of imported material makes the light rays softer.
- One lamp holder with two bulbs, in case the primary bulb is in fault, the hand switch can be used to switch to the secondary bulb for lighting.
- Imported lamp receptacle, Tungsten halogen bulbs of international brand are adopted with the average service more than 1500 hours.



●AKL600-II



●AKL600-II (wall type)

## AKL600/600-II, AKL600-II

### Specification

MODE	AKL600/600-III	AKL600-III	AKL600-II
Illumination (lux)	140000≥E <sub>c</sub> ≥60000 140000≥E <sub>c</sub> ≥60000	140000≥E <sub>c</sub> ≥80000	140000≥E <sub>c</sub> ≥80000
Color Temperature (K)	4500±500	4500±500	4500±500
Color rendering index	100≥Ra≥85	100≥Ra≥85	100≥Ra≥85
Diameter of Spot (cm)	10-28	10-28	10-28
Depth of light beam (mm)	≥700	≥700	≥700
Brightness level adjustment	CPU light-dimmer	CPU light-dimmer	CPU light-dimmer
The value of the total irradiance (service range for temperature rise≤10°C)	< 6mW/m <sup>2</sup> lx	< 6mW/m <sup>2</sup> lx	< 6mW/m <sup>2</sup> lx
Total irradiance ( Temperature rise on the head of patient under surgical operation≤2°C)	≤600W/m <sup>2</sup>	≤600W/m <sup>2</sup>	≤600W/m <sup>2</sup>
Diameter of lamp holder (mm)	600/600	600	600
Shift of major and stand by lamps	Automatic	Automatic	Automatic
Bulb power W(24V)	150/150	150	150
Power supply (AC)	220±20% 50Hz	220±20% 50Hz	220±20% 50Hz
Input power (VA)	440+10%	200+10%	220+10%
Minimum height for installation ( mm )	2800 ~ 3200	2700~3200	2800~3200



●AKL600/600-I



●AKL600-I

### Specification

MODE	AKL600-I	AKL600/600-I
Illumination (lux)	140000≥E <sub>c</sub> ≥80000	140000≥E <sub>c</sub> ≥80000 / 140000≥E <sub>c</sub> ≥80000
Color Temperature (K)	4500±500	4500±500
Color rendering index	100≥Ra≥85	100≥Ra≥85
Diameter of Spot (cm)	10-28	10-28
Depth of light beam (mm)	≥700	≥700
Brightness level adjustment	Stepless adjustment of light	Stepless adjustment of light
The value of the total irradiance (service range for temperature rise≤10°C)	< 6mW/m <sup>2</sup> lx	< 6mW/m <sup>2</sup> lx
Total irradiance ( Temperature rise on the head of patient under surgical operation≤2°C)	≤600W/m <sup>2</sup>	≤600W/m <sup>2</sup>
Diameter of lamp holder (mm)		600/600
Shift of major and stand by lamps	Hand-operated	Hand-operated
Bulb power W(24V)	150	150/150
Power supply (AC)	220±10% 50Hz	220±10% 50Hz
Input power (VA)	220+10%	440+10%
Minimum height for installation ( mm )	2800~3200	2800~3200

## AKL500 [MOBILE]

AKL500-III shadowless operation lamp is suitable for the requirements of various operation conditions and it is ideal operating lighting equipment for modern operation rooms and clean operation rooms.

### Features >

- The imported switch power supply is adopted to control the voltage, making the work voltage permanently stable.
- The removable handle sheath can be disinfected at the high temperature of 135 °C.
- The special radiation filter reducing the heat to the minimum level.
- The depolished panel is made of imported material makes the light rays softer.
- The multi-flake retroreflector made of imported aluminum sheet, has the features of no coating film and never fading.
- Light adjustment circuit adopts CPU control, enabling increase or decrease of illumination and boasting brightness memory.
- One lamp holder with two bulbs enables automatic operation of the standby bulb in 1/2 second when the main bulb malfunctions, and it has indicators for the damage of main or standby bulb.
- Imported lamp receptacle, Tungsten halogen bulbs of international brand are adopted with the average service more than 1500 hours.
- AC/DC, may satisfy when the power failure continues the surgery. (AC/DC type)

### Specification >

MODE	AKL500
Illumination (lux)	60000~120000
Color Temperature (K)	4500±500
Color rendering index (Ra)	100≥Ra≥85
Diameter of Spot (cm)	10-28
Depth of light beam (mm)	≥700



●AKL500-III (MOBILE)



●AKL500-III (MOBILE) [AC/DC]

## AKL01L SERIES

AKL01L Suitable for ENT, urology, gynecology examination and outpatient surgery half auxiliary lighting.

### Note >

- AKL01L.IP use shadowless bulbs
- AKL01L.IL use halogen bulbs
- AKL01L.IIL with battery



●AKL01L.IIL [AC/DC]



●AKL01L.IL



●AKL01L.IP

## AKL04L SERIES

AKL04L For general outpatient surgical lighting, with brake can be easy moved. AKL04L.I with battery is more suitable for cutting off power.



●AKL04L.I [AC/DC]



●AKL04L.III

## AKL05L SERIES

AKL05 is more suitable for small operating room, AKL05L.III with brake can be easy moved, AKL05L.I with battery is more suitable for cutting off power.



●AKL05L.I [AC/DC]



●AKL05L.III

●AKL05L

## AKL09L,AKL12L,AKL1205L

AKL09L AKL12L AKL1205L use of multiple different sources, by focusing knob, so the beam is irradiated from different locations surgery, reduce the shadow medical staff head, hands and other parts caused. The illumination can be adjusted according to actual needs.



● AKL1205L



● AKL09L



● AKL12L

## AKL01L

### Specification

MODE	AKL01L-IP	AKL01L-IL,AKL01L-III AC/DC
Illumination (lux)	≥12000	≥20000
Color Temperature (K)	3500±500	3500±500
Power supply (AC)	220V±10% 50Hz	220V±10% 50Hz
Rated voltage of bulb	24V	24V
Rated power of bulb	25W	50W
Input power (VA)	30	60
Note	Cold light source	Tungsten halogen bulb

## AKL04L, AKL05L

### Specification

MODE	AKL04L-I AC/DC	AKL04L-III	AKL05L,AKL05L-I,AKL05L-III
Illumination (lux)	40000	40000	50000
Color Temperature (K)	4000±500	4000±500	4000±500
Color rendering index	100≥Ra≥85	100≥Ra≥85	100≥Ra≥85
Depth of light beam (mm)	-	≥500	≥500
The value of the total irradiance(service range for temperature rise≤10°C)	< 6mW/m²lx	< 6mW/m²lx	< 6mW/m²lx
Total irradiance ( Temperature rise on the head of patient under surgical operation≤2°C)	≤600W/m²	≤600W/m²	≤600W/m²
Power supply(AC)	220V±10% 50Hz DC24V	220V±10% 50Hz DC24V	220V±10% 50Hz
Rated voltage of bulb	24V	24V	24V
Rated power of bulb	100W	100W	125W
Input power(VA)	180	120	150

## AKL09L,AKL12L,AKL1205L

### Specification

MODE	AKL09L	AKL12L	AKL1205L
Illumination of Main lamp (lux)	90000	120000	120000
Illumination of Supplementary lamp (lux)	4000±500	-	50000
Color Temperature (K)	100≥Ra≥85	4000±500	4000±500
Color rendering index	≥500	100≥Ra≥85	100≥Ra≥85
Depth of light beam (mm)	< 6mW/m²lx	≥500	≥500
The value of the total irradiance(service range for temperature rise≤10°C)	≤600W/m²	< 6mW/m²lx	< 6mW/m²lx
Total irradiance ( Temperature rise on the head of patient under surgical operation≤2°C)	220V±10% 50Hz	≤600W/m²	≤600W/m²
Power supply(AC)	24V	220V±10% 50Hz	220V±10% 50Hz
Rated voltage of bulb	225W	24V	24V
Rated power of bulb	280	300W	425W
Input power(VA)		350	500