



STAIR CHAIR



Folding Electric Climbing Chair Stair
Stretcher For Evacuation With Wheels

vest belt, lithium battery, wrench set, spongy cushion
There are different frame color and seat
color to suit different environment use



江苏如翼医疗科技有限公司

JIANGSU ROOE MEDICAL TECHNOLOGY CO.,LTD.

Add: Room1311,1313, Guotai New World Plaza, No19,

East Renmin Road,Zhangjiagang, Jiangsu, China.

Tel:+86 512 58810663

Whatsapp/Mobile:+ 86-18962287398;15962399164

Email:info@wanrooemed.com

Http://wanrooemed.com



江苏如翼医疗科技有限公司

JIANGSU ROOE MEDICAL TECHNOLOGY CO.,LTD.

EA-6FPN

Electric Stair Climbing Wheelchair 电动爬楼椅

ABS seat
ABS 舒适坐垫

Detachable lithium battery,
easy to charge, with lock
可拆卸锂电池, 方便充电, 且带防盗锁

Samsung lithium battery, detachable
三星品牌锂电池 (含CE认证), 可拆卸

Charger
(CE certificate)
充电器 (含CE认证)

Intelligent button screen, power switch, three-speed
speed control, power display, lighting button
智能按钮屏、电源开关、三速调速、
电源显示、照明按钮

Backrest height adjustable,
total 3 positions
靠背可分三档调节

Rear handle autolock
后手把带自动锁

Open the lock,
pull out the track
往外拨开按钮解锁,
向后拉开履带

Rack fold & unfold is controlled by gas spring,
hold the rear handle, one leg step, fold the track
仅需扶住椅子, 用脚轻踩, 履带便可收起

High wear-resisting rubber wheels
高耐磨橡胶轮

Specification:

- 1.24V, 200W brushless motor or 36V, 300W brush motor speed-adjustable, three speeds adjustable, with cover, power system with soft start protection , make battery using time longer , motor and battery service life also longer.
- 2.36V : With LED light, LCD power display.
- 3.Easy operating, it can climb up and down stairs smoothly and steadily by track.
- 4.It won' t glide or fall down when stop on the stairs, very safe and reliable.
- 5.Circuit is inside the pipe, waterproof, long life time, motor is noiseless during operating.
- 6.The installation position of the battery is in accordance with international standards, not close to the body, make it more safe for users. Detachable battery.
- 7.With 4 wear-resistant rubber wheels, the chair can be used as a wheelchair on the ground.
- 8.The chair is equipped with vest belt ,metal buckle straps, to ensure the safety during transport.
- 9.Made of aluminum alloy, foldable, compact and lightweight.
- 10.The electric stair chair is widely used in home for the old people, school security, hospitals, hotels etc for emergency evacuation.

Accessories : Vest belt ; Lithium battery ; Wrench set.
Optional : Spongy cushion ; Dust cover ; Wall bracket ; Manual switching clutch(the chair can glide down stairs if battery failed).

产品说明:

- 1.24V,200W无刷电机或36V,300W有刷电机 , 超强动力, 三档调速, 电路系统带软起保护, 电机和电池的使用寿命更长。
- 2.带夜间照明LED灯, 电量显示液晶屏。
- 3.该款电动爬楼梯广泛适用于家庭老人, 学校, 酒店, 医院等上下楼梯或紧急疏散使用。
- 4.本产品对楼梯台阶的高度和台阶平面的宽度没有限制, 只要是一般小区的楼梯都能使用。
- 5.操作简单, 履带式设计, 上下楼非常平稳轻松, 在上下楼过程中即使停下也不会下滑或倾斜, 非常安全可靠。
- 6.隐蔽式防水电路设计, 操作无噪音, 使用寿命更长, 且更加高端大方。
- 7.电池的安装位置按照国际标准, 不紧贴人体, 让使用者感觉更舒心。
- 8.50CM加宽椅背设计, 适用于胖瘦人群, 尤其使老人坐起来更为舒适。
- 9.带有4个轮子, 在平地上可当椅子推行, 轮子为橡胶材质, 坚固耐磨。
- 10.椅子配有背心式金属扣绑带, 以保证在转运过程中的安全。
- 11.铝合金材质, 可折叠, 小巧轻便。

配件: 背心式安全带; 锂电池; 紧固螺丝扳手套装。
选配件: 海绵坐垫; 墙上挂钩; 防尘罩; 手动切换离合器 (电池没电时可手动推下)。

- 1.200W brushless motor or 300W Brush motor, super power, three speeds adjustable .
- 2.50cm width backrest, suitable for all people.
- 3.ABS seat, more comfortable for old people.
- 4.Vest belts, more safe.

- 1.200W无刷电机或300W有刷电机, 超强动力, 三档调速。
- 2.50cm 宽靠背, 适用于所有人群。
- 3.ABS软垫, 更适用于老年人。
- 4.背心交叉式绑带, 安全可靠。



With LED light. It won' t glide or fall down when stop on the stairs, very safe and reliable.

带LED照明灯, 即使中途停留在楼梯上, 不会下滑或倾斜

PRODUCT SPECIFICATION

MODEL: EA-6FPN

N.W: 27KG	LOAD-BEARING: 160KG (24V) ; 180KG (36V)	
PACKING: 1PC/CTN	WOOD BOX SIZE: 116x55x30cm	G.W: 45KG
FOLDED SIZE(L*W*H): 115x50x27cm		Using Time of Full Charge: 2hours (up and down five layer building stairs 15 times)
Suitable Stair: No less than 80x80cm		Speed: About 45-55 steps per min
Repeated Charging Times: 500times		Battery Life: 3-5YEARS
UN-FOLD SIZE (L*W*H): 80~110x50x110~160cm		
Brushless Motor: 24V, 200W; 36V,300W (speed-adjustable), High Quality, noiseless		
Track: High wear-resistant materials, life time 3~5 years		

产品描述

型号: EA-6FPN

自重: 27KG	承重: 24V: 160KG ; 36V: 180KG	
充电使用时间: 2小时 (相当于5层楼梯上下15多次)	可重复充电次数: 500多次	使用寿命: 3-5年
展开尺寸: 80~110x50x110~160cm		折叠尺寸: 115x50x27cm
履带: 高耐磨材料, 使用寿命3-5年		速率: 大约每分钟45-55个台阶
无刷机电压: 24V, 200W; 36V,300W (速度可调), 高质量.几乎无噪音		
对楼道的要求: 不低于80x80cm的均使用		



82cm long track, can easy reach 3 stairs together, very smooth
82厘米长履带, 可搭乘3个最长的台阶, 上下楼不会颠簸

EA-6FPN PRO

Electric Stair Climbing Wheelchair 电动爬楼椅

Open the lock,
pull out the track
往外拨开按钮解锁,
向后拉开履带

One-button folding design,
lightweight seats can be folded at will.
按钮一键折叠设计, 轻便座椅便可折叠。

Samsung lithium battery, detachable
三星品牌锂电池 (含CE认证), 可拆卸



Charger
(CE certificate)
充电器 (含CE认证)



Detachable lithium battery,
easy to charge, with lock
可拆卸锂电池,
方便充电, 且带防盗锁

Intelligent button screen, power switch, three-speed
speed control, power display, lighting button
智能按钮屏、电源开关、三速调速、
电源显示、照明按钮



The three-stop can be
adjusted, and the back and
lower height is 120 to 160 cm.
三挡可调, 靠背高度可调节到
120-160厘米。



Backrest height adjustable,
total 3 positions
靠背可分三档调节



Rack fold & unfold is controlled by gas spring,
hold the rear handle, one leg step, fold the track
仅需扶住椅子, 用脚轻踩, 履带便可收起



4 wear-resistant honeycomb
wheel, front wheel 6 inch,
rear wheel 12 inch
4个耐磨蜂窝轮, 前轮6寸, 后轮12寸



Specification:

- (1) Aluminum alloy material, foldable, compact structure, light weight.
- (2) Advanced electric climbing medical evacuation staircase chair parked on the stairs without sliding, not falling, very safe and reliable.
- (3) Easy to operate, it can be smoothly up and down along the track.
- (4) Wheelchair has 4 wear-resistant honeycomb wheel, front wheel 6 inch, rear wheel 12 inch, shock absorption, stable, and can be used as a wheelchair on the ground.
- (5) Double-side brake design, the parking brakes are stable.
- (6) Horizontal stripes crawler, natural rubber material, grip, not slippery, strong wear.
- (7) Truck lock, one pulls. The track is turned on and folded by the gas spring, holding the handle, single foot step, folding the track.
- (8) One-button folding design, lightweight seats can be folded at will.
- (9) Highly adjustable curved armrest design, convenient for occupants to catch the arm. Rear folding handle, push more favorable.
- (10) The three-stop can be adjusted, and the back and lower height is 110 to 170 cm.
- (11) Thickened cushion and leather back, wear-resistant, easy to remove, easy to clean.
- (12) Cross-type seat belt, metal buckle belt, more guarantees to the occupant.
- (13) Foldable foot pedal, convenient and safe, effectively prevent users from accidentally fall.
- (14) The internal circuits of the pipeline, waterproof, long life, no noise of motor operation.
- (15) Maximum load: 160 kg
- (16) Intelligent button screen, power switch, three-speed speed control, power display, lighting button
- (17) Electric staircase chairs are widely used in emergency evacuation places such as nursing homes, school security, hospitals, and hotels.
- (18) Endurance Lithium 24V battery, convenient charging, lock. The battery installation location is in line with international standards, not close to the body, so that users feel more comfortable. Removable battery. Optional 36V motor, plus horsepower.

Accessories : Vest belt, lithium battery, sponge pad, wrench set. There are different frames of frames and seat colors to adapt to different environments.
Optional : Pillow, dust cover, wall bracket, 36V battery.

产品说明:

- (1)铝合金材质，可折叠，结构紧凑，重量轻。
- (2)先进电动攀爬医疗疏散楼梯椅停在楼梯上不滑动、不摔倒，非常安全可靠。
- (3)操作方便，可沿轨道平稳上下楼梯。
- (4)轮椅有4个耐磨蜂窝轮，前轮6寸，后轮12寸，减震、稳固，在地面上可作轮椅使用。
- (5)双侧刹车设计，驻车刹车稳固。
- (6)横纹履带，天然橡胶材质，抓地力更强，不打滑，结实耐磨。
- (7)履带锁扣，一拉即开。履带开启和折叠由气弹簧控制，握住后把手，单脚踏步，折叠履带。
- (8)按钮一键折叠设计，轻提座椅轻便可折叠。
- (9)pu发泡材质弧形扶手设计，方便乘坐者抓扶，放松手臂。后折叠推手，结实推送更有利，折叠省空间。
- (10)三挡可调节靠背，可上下调节靠背高度110~160CM。
- (11)加厚坐垫和皮革靠背，耐磨透气，轻松拆卸，易清洗。
- (12)交叉式安全带，金属扣带，给乘坐者多一份保障。
- (13)可折叠脚踏板，方便安全，有效防止用户不小心跌倒。
- (14)管路内部电路，防水，寿命长，电机运行无噪音。
- (15)最大负载:160kg
- (16)智能按键屏显，电源开关，三档调速，电量显示，照明灯按钮
- (17)电动楼梯椅广泛应用于养老院、学校保安、医院、宾馆等紧急疏散场所。
- (18)高续航锂24V电池，充电方便，带锁。电池安装位置符合国际标准，不靠近身体，让用户感觉更舒适。可拆卸电池。可选36V电机加大马力。



Maximum Load: 160 kg
最大负载:160kg

配件:背心腰带，锂电池，海绵坐垫，扳手套装，有不同的车架颜色和座椅颜色，以适应不同的环境使用。
可选:枕头，防尘罩，墙支架， 36V电池。

PRODUCT SPECIFICATION

MODEL: EA-6FPN Pro

N.W: 40KG	G.W: 45KG/43kgs for speed-regulating model	
WOOD BOX SIZE: 116x55x30cm	LOAD-BEARING: 160kg(24V);180kg(36V)	
FOLDED SIZE(L*W*H): 120~160x55x45cm	Using Time of Full Charge: 2hours (up and down five layer building stairs 15 times)	
Suitable Stair: No less than 80x80cm	Speed: About 45-55 steps per min	
Repeated Charging Times: 500times	Battery Life: 3-5YEARS	
UN-FOLD SIZE (L*W*H): 120~160x55x45cm	PACKING: 1PC/CTN	
Motor: 24V,200W,High Quality, no noise ; 36V motor for speed adjustable model, special for evacuation use, chair with big power, to suit quick rescue.		

Track: High wear-resistant materials, life time 3~5 years



Gravel Road



Asphalt Road



Cobblestone Road

产品描述

型号: EA-6FPN Pro

自重: 40KG	木箱尺寸: 116x55x30cm	适用楼梯: 不小于80x80cm	
毛重:45KG/43kg, 适用于调速型		可重复充电次数: 500多次	包装: 每箱1件
折叠尺寸: 120~160x55x45cm		使用寿命: 3~5年	充电使用时间: 2小时 (相当于5层楼梯上下15多次)
履带: 高耐磨材料, 使用寿命3~5年		速率: 大约每分钟45~55个台阶	
承重: 24V: 160KG ; 36V: 180KG		展开尺寸: 120~160x55x45cm	
电机: 24V, 200W, 高品质, 无噪音; 36V电机, 适用于调速型, 专用于疏散用途, 座椅功率大, 适合快速救援。			



The Grass



The Trestle



All Kinds Of Stairs

EA-6FPN PLUS

Electric Stair Climbing Wheelchair

电动爬楼椅

Detachable lithium battery, easy to charge, with lock
可拆卸锂电池, 方便充电, 且带防盗锁



Foldable foot pedal, prevent users from fall.
可折叠脚踏板, 防止使用者摔倒。

Samsung lithium battery, detachable
三星品牌锂电池 (含CE认证), 可拆卸



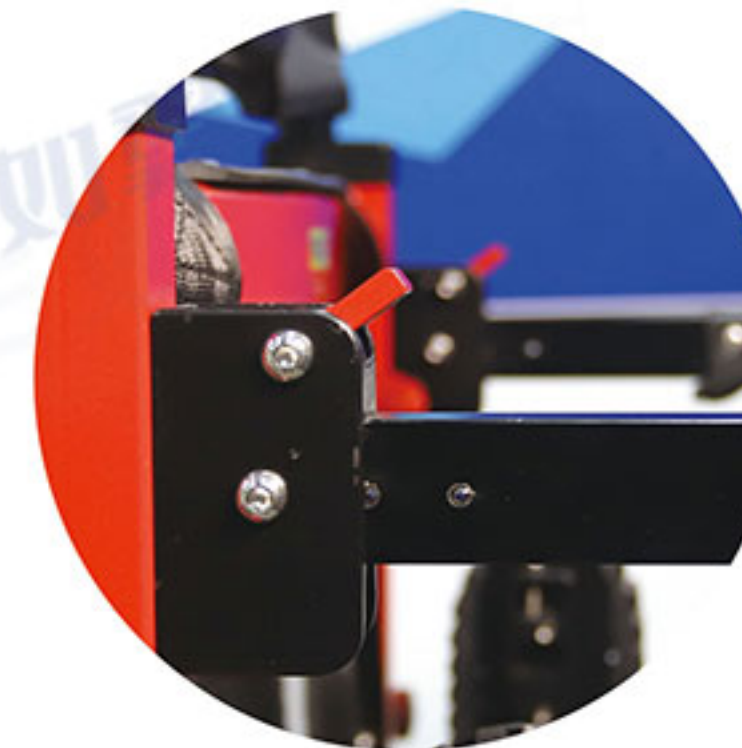
Charger
(CE certificate)
充电器 (含CE认证)



Intelligent button screen, power switch, three-speed speed control, power display, lighting button
智能按钮屏、电源开关、三速调速、电源显示、照明按钮



Rear handle autolock
后把手带自动锁



Backrest height adjustable, total 3 positions
靠背可分三档调节



Open the lock, pull out the track
往外拨开按钮解锁, 向后拉开履带



4 wear-resistant honeycomb wheel, front wheel 6 inch, rear wheel 12 inch
4个耐磨蜂窝轮, 前轮6寸, 后轮12寸



Rack fold & unfold is controlled by gas spring, hold the rear handle, one leg step, fold the track
仅需扶住椅子, 用脚轻踩, 履带便可收起

Specification :

- (1) Aluminum alloy material, foldable, compact structure, light weight.
- (2) Advanced electric climbing medical evacuation staircase chair parked on the stairs without sliding, not falling, very safe and reliable.
- (3) Easy to operate, it can be smoothly up and down along the track.
- (4) Wheelchair has 4 wear-resistant honeycomb wheel, front wheel 6 inch, rear wheel 12 inch, shock absorption, stable, and can be used as a wheelchair on the ground.
- (5) Double-side brake design, the parking brakes are stable.
- (6) Horizontal stripes crawler, natural rubber material, grip, not slippery, strong wear.
- (7) Truck lock, one pulls. The track is turned on and folded by the gas spring, holding the handle, single foot step, folding the track.
- (8)The wheelchair can be lifted and folded manually by using the receiving bar.
- (9) Highly adjustable curved armrest design, convenient for occupants to catch the arm. Rear folding handle, push more favorable.
- (10) The three-stop can be adjusted, and the back and lower height is 110 to 170 cm.
- (11) Thickened cushion and leather back, wear-resistant, easy to remove, easy to clean.
- (12) Cross-type seat belt, metal buckle belt, more guarantees to the occupant.
- (13) Foldable foot pedal, convenient and safe, effectively prevent users from accidentally fall.
- (14) The internal circuits of the pipeline, waterproof, long life, no noise of motor operation.
- (15)Maximum load: 160 kg
- (16) Intelligent button screen, power switch, three-speed speed control, power display, lighting button
- (17) Electric staircase chairs are widely used in emergency evacuation places such as nursing homes, school security, hospitals, and hotels.
- (18) Endurance Lithium 24V battery, convenient charging, lock. The battery installation location is in line with international standards, not close to the body, so that users feel more comfortable. Removable battery.

Accessories : Vest belt, lithium battery, sponge pad, wrench set.
There are different frames of frames and seat colors to adapt to different environments.
Optional : Pillow, dust cover, wall bracket.

产品说明:

- (1)铝合金材质，可折叠，结构紧凑，重量轻。
- (2)先进电动攀爬医疗疏散楼梯椅停在楼梯上不滑动、不摔倒，非常安全可靠。
- (3)操作方便，可沿轨道平稳上下楼梯。
- (4)轮椅有4个耐磨蜂窝轮，前轮6寸，后轮12寸，减震、稳固，在地面上可作轮椅使用。
- (5)双侧刹车设计，驻车刹车稳固。
- (6)横纹履带，天然橡胶材质，抓地力更强，不打滑，结实耐磨。
- (7)履带锁扣，一拉即开。履带开启和折叠由气弹簧控制，握住后把手，单脚踏步，折叠履带。
- (8)轮椅可手动使用收纳横杆抬起折叠。
- (9)pu发泡材质弧形扶手设计，方便乘坐者抓扶，放松手臂。后折叠把手，结实推送更有利。
- (10)三挡可靠靠背，可上下调节靠背高度110~170CM。
- (11)加厚坐垫和皮革靠背，耐磨透气，轻松拆卸，易清洗。
- (12)交叉式安全带，金属扣带，给乘坐者多一份保障。
- (13)可折叠脚踏板，方便安全，有效防止用户不小心跌倒。
- (14)管路内部电路，防水，寿命长，电机运行无噪音。
- (15)最大负载:160kg
- (16)智能按键屏显，电源开关，三档调速，电量显示，照明灯按钮
- (17)电动楼梯椅广泛应用于养老院、学校保安、医院、宾馆等紧急疏散场所。
- (18)拔插式高续航24V锂电池，充电方便，带锁。电池安装位置符合国际标准，不靠近身体，让用户感觉更舒适。



Maximum Load: 160 kg
最大负载:160kg

可选:枕头，防尘罩，墙支架。
配件:背心腰带，锂电池，海绵垫，扳手套装，有不同的车架颜色和座椅颜色，以适应不同的环境使用。

PRODUCT SPECIFICATION

MODEL: EA-6FPN Plus

N.W: 40KG		G.W: 53KG/53kgs for speed-regulating model	
WOOD BOX SIZE: 116x55x30cm		LOAD-BEARING: 160kg(24V)	
FOLDED SIZE(L*W*H): 114x62x60cm		Using Time of Full Charge: 2hours (up and down five layer building stairs 15 times)	
Suitable Stair: No less than 80x80cm		Speed: About 45-55 steps per min	
Repeated Charging Times: 500times		Battery Life: 3~5YEARS	
UN-FOLD SIZE (L*W*H): 110~160x62x60cm		PACKING: 1PC/CTN	
Motor: 24V,200W,High Quality, No noise			
Track: High wear-resistant materials, life time 3~5 years			

产品描述

型号: EA-6FPN Plus

自重：40KG	木箱尺寸：116x55x30cm	适用楼梯：不小于80x80cm	
毛重：53KG/53kg，适用于调速型		可重复充电次数：500多次	包装：每箱1件
折叠尺寸：114x62x60cm		使用寿命：3~5年	充电使用时间：2小时 (相当于5层楼梯上下15多次)
履带：高耐磨材料，使用寿命3~5年		速率：大约每分钟45~55个台阶	
承重：24V: 160KG		展开尺寸：110~160x62x60cm	
电机：24V，200W，高品质，无噪音			



EA-6FPN
Suitable for first aid



EA-6FPN Pro
Suitable for home use, nursing home



EA-6FPN Plus
Suitable for home use, nursing home

COLOR



Red



Green



Yellow



white



blue

Different frame color, can be customized,
White, blue for special customization
(不同的框架颜色, 量大可以定制, 白色, 蓝色为特别定制款)

MATERIAL



ABS board



PVC leather with foam



PVC leather

Seat material, can be customized (座椅材料, 可定制)

CONTROL PANEL



24V
(speed-adjustable)



36V
(speed-adjustable)

OPTIONAL



Dust cover



Curved handrail



Pillow



Sponge pad



Oxygen cylinder holder



Big wheels



Wall bracket

TRACKS



Track with vertical slot
(more comfortable)



Track with ridges
(anti-sliding)

ACCESSORIES



Vest belt



Lithium battery(24V/36V)



Wrench set

EA-7FPN

Electric Stair Climbing Trolley 电动爬楼车

S/S button, sink the button then chair move
不锈钢金属按钮，按键下沉启动，LED灯，三挡调速

Samsung lithium battery, detachable
三星品牌锂电池（含CE认证），可拆卸

Charger(CE certificate)
充电器（含CE认证）

Detachable lithium battery,
easy to charge ,with lock
可拆卸锂电池，方便充电，且带防盗锁

Backrest height adjustable,
total 4 positions
靠背可分四档调节

Track adjust
履带调节

Rear handle autolock
后手把带自动锁

Open the lock,
pull out the track
往外拨开按钮解锁，
向后拉开履带

Rack fold & unfold is controlled by gas spring,
hold the rear handle, one leg step, fold the track
仅需扶住椅子，用脚轻踩，履带便可收起

High wear-resisting rubber wheels
高耐磨橡胶轮

Specification :

- 1.36V, 300W brushless motor , three speeds adjustable , with cover , power system with soft start protection , make battery using time longer , motor and battery service life also longer.
- 2.With LED light, LCD power display.
- 3.Easy operating, it can climb up and down stairs smoothly and steadily by track.
- 4.It won' t glide or fall down when stop on the stairs, very safe and reliable.
- 5.Circuit is inside the pipe, waterproof, long life time, motor is noiseless during operating.
- 6.With 4 wear-resistant rubber wheels.
- 7.The trolley is equipped with metal buckle straps, to ensure the safety during transport.
- 8.Made of aluminum alloy, foldable, compact and lightweight.
- 9.The electric stair climbing trolley is widely used in all kinds of stairs to transport goods.

Accessories : Lithium battery ; Wrench set.
Optional : Dust cover ; Wall bracket ; Manual switching clutch(the trolley can glide down stairs if battery failed).

产品说明:

- 1.36V , 300W 无刷电机，超强动力，三档调速，电路系统带软起保护，电机和电池的使用寿命更长。
- 2.带夜间照明LED灯，电量显示液晶屏。
- 3.该款电动爬楼车广泛适用于各种楼道上下楼搬运货物使用。
- 4.本产品对楼梯台阶的高度和台阶平面的宽度没有限制，只要是一般小区的楼梯都能使用。
- 5.操作简单，履带式设计，上下楼非常平稳轻松，在上下楼过程中即使停下也不会下滑或倾斜，非常安全可靠。
- 6.隐蔽式防水电路设计，操作无噪音，使用寿命更长，且更加高端大方。
- 7.带有4个轮子，轮子为橡胶材质，坚固耐磨。
- 8.配有金属扣绑带。
- 9.铝合金材质，可折叠，小巧轻便。

配件: 锂电池，紧固螺丝扳手套装。
选配件: 墙上挂钩，防尘罩；手动切换离合器（电池没电时可手动推下）。

- 1.300W brushless motor.
- 2.super power.
- 3.three speeds adjustable.

- 1.300W无刷电机。
- 2.超强动力。
- 3.三档调速。



PRODUCT SPECIFICATION

MODEL: EA-7FPN

N.W:27kg(36V,300W,speed-adjustable)		LOAD-BEARING: 160KG	
PACKING: 1PC/CTN	WOOD BOX SIZE: 116x55x30cm		G.W: 45KG
FOLDED SIZE(L*W*H): 115x50x27cm		Using Time of Full Charge: 2hours (up and down five layer building stairs 15 times)	
Suitable Stair: No less than 80x80cm		Speed: About 45-55 steps per min	
Repeated Charging Times: 500times		Battery Life: 3~5YEARS	
UN-FOLD SIZE (L*W*H): 80~110x50x110~160cm			
Brushless Motor: 36V,300W,Speed-adjustable , High Quality, Noiseless			
Track: High wear-resistant materials, Life time 3~5 years			

产品描述

型号: EA-7FPN

自重：27kg (36V,300W,速度可调)		承重：160KG
充电使用时间：2小时 (相当于5层楼梯上下15多次)	可重复充电次数：500多次	使用寿命：3~5年
展开尺寸：80~110x50x110~160cm		折叠尺寸：115x50x27cm
履带：高耐磨材料，使用寿命3~5年		速率：大约每分钟45~55个台阶
无刷电机电压：36V,300W,速度可调, 高质量.几乎无噪音		
对楼道的要求：不低于80x80cm的均使用		



speed-adjustable the stairs, very safe and reliable.
即使中途停留在楼梯上，不会下滑或倾斜



82cm long track, can easy reach 3 stairs together, very smooth
82厘米长履带,可搭乘3个最长的台阶,上下楼不会颠簸

EA-8FPN

Electric Stair Climbing Wheelchair 电动爬楼椅

ABS seat
ABS 舒适坐垫

Universal remote control
智能万向遥控器

Detachable lithium battery,
easy to charge, with lock
可拆卸锂电池, 方便充电, 且带防盗锁

Samsung lithium
battery, detachable
三星品牌锂电池
(含CE认证), 可拆卸

Charger
(CE certificate)
充电器 (含CE认证)

S/S button, sink the
button then chair move
不锈钢金属按钮, 按键下沉启动,
LED灯, 三挡调速

Backrest height adjustable,
total 4 positions
靠背可分四档调节

Rear handle autolock
后手把带自动锁

Open the lock,
pull out the track
往外拨开按钮解锁,
向后拉开履带

Rack fold & unfold is controlled by gas spring,
hold the rear handle, one leg step, fold the track
仅需扶住椅子, 用脚轻踩, 履带便可收起

High wear-resisting rubber wheels
高耐磨橡胶轮

Specification :

- 1.Three speeds adjustable, with cover, power system with soft start protection , make battery using time longer , motor and battery service life also longer.
- 2.With LED light, LCD power display.
- 3.Easy operating, it can climb up and down stairs smoothly and steadily by track.
- 4.It won’ t glide or fall down when stop on the stairs, very safe and reliable.
- 5.Circuit is inside the pipe, waterproof, long life time, motor is noiseless during operating.
- 6.The installation position of the battery is in accordance with international standards, not close to the body, make it more safe for users. Detachable battery.
- 7.The chair is equipped with vest belt, metal buckle straps, to ensure the safety during transport.
- 8.Made of aluminum alloy, foldable, compact and lightweight.
- 9.The electric stair chair is widely used in home for the old people, school security, hospitals, hotels etc for emergency evacuation.
- 10.Universal remote control, speed adjustable,with honking Wheelchair has 2pcs 150W brushless motor with brakes, speed adjustable, shock absorptionfront wheels, does not slide when the slope.
- 11.when no power, switch to manual gear, can also use as a manual wheelchair.

Accessories : Vest belt ; lithium battery ; wrench set ; spongy cushion.
Optional : Dust cover ; Wall bracket ; Manual switching clutch(the wheelchair can glide down stairs if battery failed).

产品说明:

- 1.超强动力，上下楼三档调速，电路系统带软起保护，电机和电池的使用寿命更长。
- 2.带夜间照明LED灯，电量显示液晶屏。
- 3.该款电动爬楼梯椅广泛适用于家庭老人，学校，酒店，医院等上下楼梯或紧急疏散使用。
- 4.本产品对楼梯台阶的高度和台阶平面的宽度没有限制，只要是一般小区的楼梯都能使用。
- 5.操作简单，履带式设计，上下楼非常平稳轻松，在上下楼过程中即使停下也不会下滑或倾斜，非常安全可靠。
- 6.隐蔽式防水电路设计，操作无噪音，使用寿命更长，且更加高端大方。
- 7.电池的安置位置按照国际标准，不紧贴人体，让使用者感觉更舒心。
- 8.50CM加宽椅背设计，适用于胖瘦人群，尤其使老人坐起来更为舒适。
- 9.椅子配有背心式金属扣绑带，以保证在转运过程中的安全。
- 10.铝合金材质，可折叠，小巧轻便。
- 11.通过智能万象控制器椅子地面行驶操作自如，速度加减档按钮可调节行驶速度，转向摇杆360度无死角操作，自带喇叭鸣笛警示功能。
- 12.代步采用2个150W无刷电机，变速流畅，进退自如，前轮带减震设计，行驶平稳，采用电磁刹车系统，斜坡松手即停，不滑坡。
- 13.没电时切换到手动档位，可当手动轮椅推行。

配件: 背心式安全带；锂电池；紧固螺丝扳手套装；爱心坐垫。
选配件: 墙上挂钩；防尘罩；手动切换离合器（电池没电时可手动推下）。

Super power,three speeds adjustable.
50cm width backrest, suitable for all people.
ABS seat, more comfortable for old people.
Vest belts, more safe.

超强动力，三档调速50cm 宽靠背，适用于所有人群。
ABS 舒适坐垫，更适用于老年人。
背心交叉式绑带，安全可靠。



Blue for special customization
(蓝色为特别定制款)

PRODUCT SPECIFICATION

MODEL: EA-8FPN

N.W:32kg		LOAD-BEARING: 160KG	
PACKING: 1PC/CTN	WOOD BOX SIZE: 118*55*30CM		G.W: 45KG
FOLDED SIZE(L*W*H): 115x50x27cm		Using Time of Full Charge: 2hours (up and down five layer building stairs 15 times)	
Suitable Stair: No less than 80*80CM		Speed: About 45-55 steps per min	
Repeated Charging Times: 500times		Battery Life: 3~5YEARS	
UN-FOLD SIZE (L*W*H): 80~110x50x110~160cm			
Track: High wear-resistant materials, Life time 3~5 years			

产品描述

型号: EA-8FPN

自重：32kg		承重：160KG	
充电使用时间：2小时 (相当于5层楼梯上下15多次)	可重复充电次数：500多次	使用寿命：3~5年	
展开尺寸：80~110x50x110~160cm		折叠尺寸：115x50x27cm	
履带：高耐磨材料，使用寿命3~5年		速率：大约每分钟45~55个台阶	
对楼道的要求：不低于80x80cm的均使用			



speed-adjustable the stairs,
very safe and reliable.
即使中途停留在楼梯上，不会下滑或倾斜



82cm long track, can easy reach
3 stairs together, very smooth
82厘米长履带,可搭乘3个最长的台阶,上下楼不会颠簸

EA-6FPA

Electric Stair Climbing Wheelchair

电动爬楼梯



Specification :

- 1. Unfold size: 80x66x164cm, folding size: 115x66x32cm.
- 2. Net weight: 42kgs, Load capacity: 180kgs.
- 3. Battery life: 1.5 hours (equal to 70 floors stairs up and down).
- 4. This stair chair is made of high strength aluminum alloy, durable and easy to clean.
- 5. 6 inch front rubber castor and 8 inch rear rubber castor are safe and stable.
- 6. Sponge covered armrest, diving sponge covered back and seat cushion are very comfortable to use.
- 7. Folding structure design is very easy to carry when going out.
- 8. Battery and voltage display screen.
- 9. In the state of power failure, the chair can slide down smoothly manually.

Standard accessories: Safety belt.
Optional accessories: : IV pole , oxygen bottle holder.

产品说明:

- 1.展开尺寸: 80x66x164cm, 折叠尺寸: 115x66x32cm。
- 2.净重: 42kgs, 负载能力: 180kgs。
- 3.电池寿命: 1.5小时 (相当于上下70层楼梯)。
- 4.这款楼梯椅采用高强度铝合金制成, 坚固耐用且易于清洁。
- 5. 6英寸前橡胶脚轮和8英寸后橡胶脚轮安全稳定。
- 6.海绵包裹的扶手, 潜水海绵包裹的靠背和座垫都非常使用舒适。
- 7.折叠结构设计, 外出携带非常方便。
- 8.有电量和电压显示屏。
- 9.在停电状态时, 爬楼椅可手动平稳下滑。

标准附件: 8.标准附件: 安全带
可选配件: 输液架, 氧气瓶架



PRODUCT SPECIFICATION

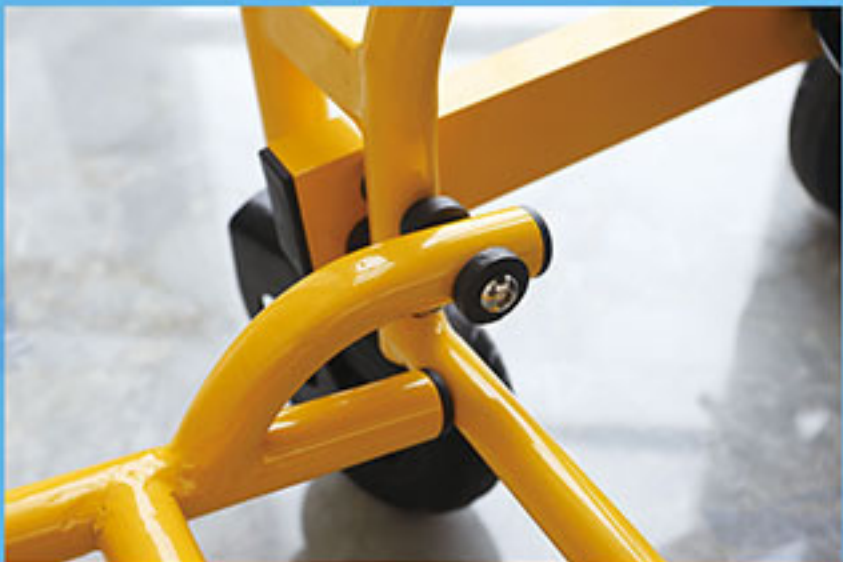
MODEL: EA-6FPA

N.W:42KG	G.W: 45KG	Load-Bearing: 180KG	Mat size: 35x26cm
Front wheel size: 6 inches	Rear wheel size: 8 inches	Handrail length: 33cm	
Folding Size(L*W*H): 110x66x32cm	Open Size(L*W*H): 66x80x115cm		
Battery size: 24x12x9cm	Length of track: 100cm		
Overall width: 66cm	Seat size: 42x48cm		
Seat surface to ground height: 55cm	Seat back width: 50cm		
SEAT BACK HEIGHT			
First gear:115cm	Second gear:130cm	Third gear:147cm	Fourth gear:164cm

产品描述

型号: EA-6FPA

净重: 42kg	毛重: 45kg	承重: 180kg	坐垫尺寸: 35x26cm
前轮尺寸: 6寸	后轮尺寸: 8寸	扶手长度: 33cm	
折叠尺寸: 110x66x32cm	展开尺寸: 66x80x115cm		
电池尺寸: 24x12x9cm	轨道长度: 100cm		
总长度: 66cm	座椅尺寸: 42x48cm		
座椅表面至地面高度: 55cm	座椅靠背宽度: 50cm		
座椅靠背高度: 第一档位:115cm 第二档位:130cm 三档档位:147cm 四档档位:164cm			



EA-6FPNW

Electric Stair Climbing Trolley for Wheelchair 轮椅对接车

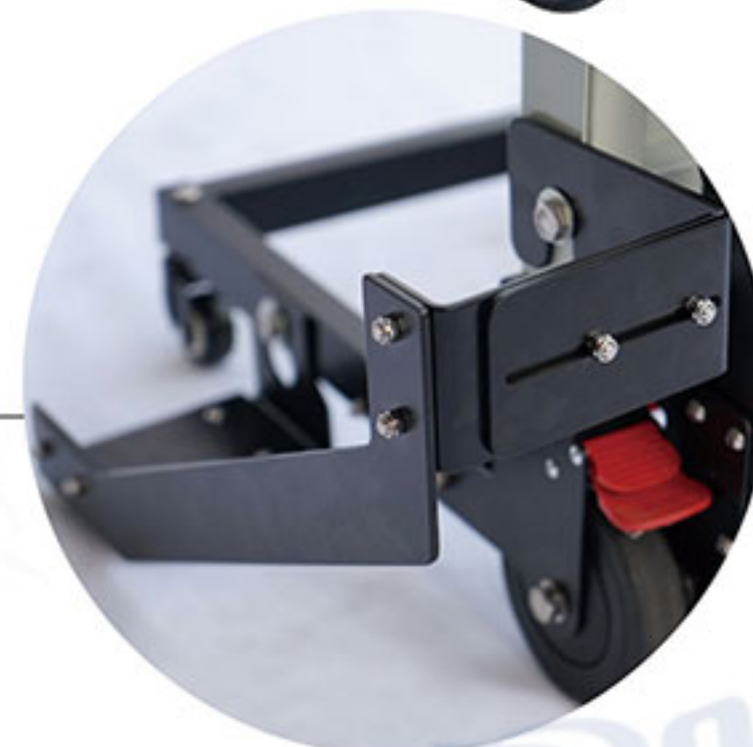
S/S button, sink the button then chair move
不锈钢金属按钮, 按键下沉启动, LED灯, 三挡调速



Rear handle autolock
后手把带自动锁



The fixing device can be adjusted according to the width of the wheelchair.
固定装置可根据轮椅的宽度调节



This part is used to fix the wheels of the wheelchair, can be adjusted according to the thickness of the wheels
这部分是用来固定轮椅的轮子, 可以根据车轮的厚度进行调整。

Backrest height adjustable, total 4 positions
靠背可分四档调节



Open the lock, pull out the track
往外拨开按钮解锁, 向后拉开履带



Track adjust
履带调节



High wear-resisting rubber wheels
高耐磨橡胶轮



Charger(CE certificate)
充电器 (含CE认证)



Detachable lithium battery, easy to charge, with lock
可拆卸锂电池, 方便充电, 且带防盗锁



Samsung lithium battery, detachable
三星品牌锂电池 (含CE认证), 可拆卸

Specification :

- 1.24V, 200W or 36V, 300W brushless motor , three speeds adjustable , with cover , power system with soft start protection, make battery using time longer, motor and battery service life also longer.
- 2.With LED light, LCD power display.
- 3.Easy operating, it can climb up and down stairs smoothly and steadily by track.
- 4.It won' t glide or fall down when stop on the stairs, very safe and reliable.
- 5.Circuit is inside the pipe, waterproof, long life time, motor is no noise during operating.
- 6. Made of aluminum alloy, foldable, compact and lightweight.
- 7.It can fit different size wheelchair by adjust the width of the universal trolley.
- 8.During transport ,the side wings is detachable, the trolley is foldable.

Accessories : Lithium battery ; Wrench set.
Optional : Dust cover ; Wall bracket ; Manual switching clutch(the trolley can glide down stairs if battery failed).

产品说明:

- 1.24V、200W或36V、300W无刷电机，三速可调，带盖，电力系统软启动保护，使电池使用时间更长，电机和电池使用寿命也 longer。
- 2.LED灯，液晶显示器。
- 3.操作方便，可通过轨道平稳地上下楼梯。
- 4.在楼梯上停车时不会滑倒或跌倒，非常安全可靠。
- 5.回路在管道内，防水，使用寿命长；电机在运行过程中无噪声。
- 6.采用铝合金制造，可折叠，小巧轻便。
- 7.通过调整万能手推车的宽度可适应不同尺寸的轮椅。
- 8.在运输过程中，侧翼可拆卸，小车可折叠。

配件: 锂电池，紧固螺丝扳手套装。
选配件: 墙上挂钩，防尘罩；手动切换离合器（电池没电时可手动推下）。



PRODUCT SPECIFICATION

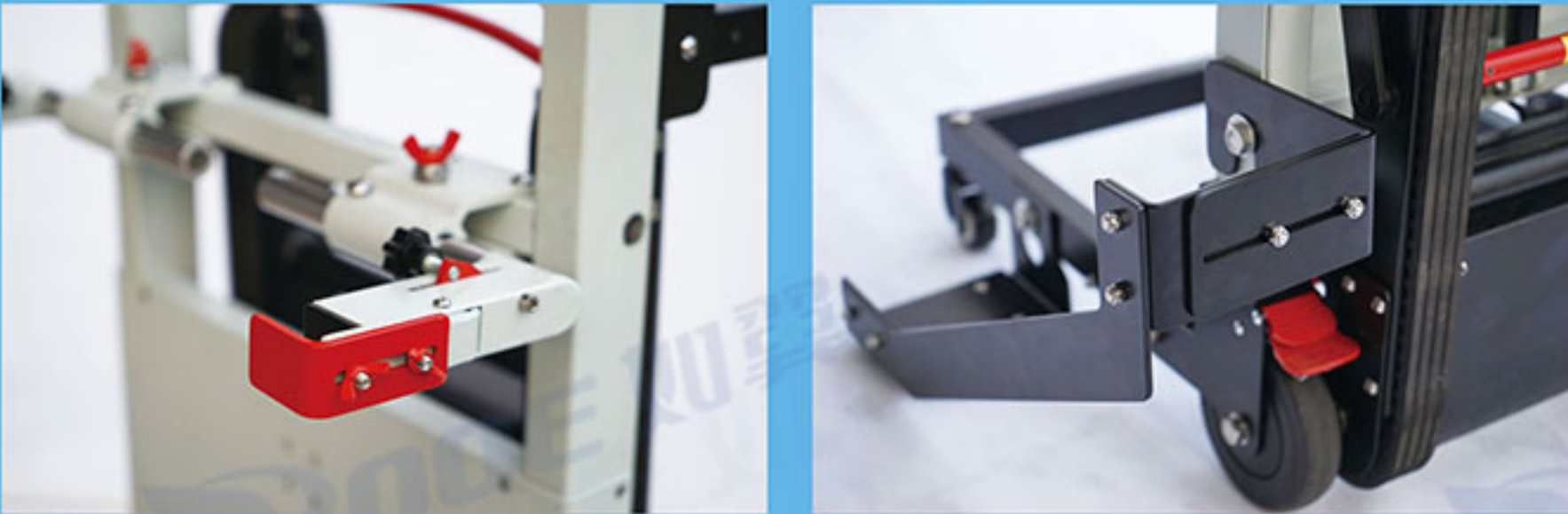
MODEL: EA-6FPNW

N.W:30kg (24V,200W) ; 27kg (36V,300W,speed-adjustable)		LOAD-BEARING: 160KG
PACKING: 1PC/CTN	WOOD BOX SIZE: 116x55x30cm	G.W: 45KG
FOLDED SIZE(L*W*H): 115x40x25cm		Using Time of Full Charge: 2hours (up and down five layer building stairs 15 times)
Suitable Stair: No less than 80x80cm		Speed: About 45-55 steps per min
Repeated Charging Times: 500times		Battery Life: 3-5YEARS
UN-FOLD SIZE (L*W*H): 70x70x110~160cm		
Brushless Motor: 24V , 200W or 36V,300W ,High Quality, Noiseless		
Track: High wear-resistant materials, Life time 3-5 years		

产品描述

型号: EA-6FPNW

自重: 30kg (24V,200W) ; 27kg (36V,300W,速度可调)		承重: 160KG
充电使用时间: 2小时 (相当于5层楼梯上下15多次)	可重复充电次数: 500多次	使用寿命: 3-5年
展开尺寸: 70x70x110~160cm		折叠尺寸: 115x40x25cm
履带: 高耐磨材料, 使用寿命3-5年		速率: 大约每分钟45-55个台阶
无刷电机电压: 24V , 200W; 36V,300W (速度可调), 高质量.几乎无噪音		
对楼道的要求: 不低于80x80cm的均使用		



EA-5FPN

Electric Stair Climbing Wheelchair

电动爬楼梯

Up-and downstairs direction
control key
上下楼方向控制键

Human sitting and
lying control key
人体坐躺控制键

Foot rest, Foldable
置脚架, 可折叠

Sponge cushion, comfortable
and high air permeability
海绵座垫, 舒适透气

Tank track design
坦克履带设计

Detachable lithium battery,
easy to charge, with lock
可拆卸锂电池, 方便充电, 且带防盗锁

8 inch front explosion-proof castor
8英寸前防爆脚轮

12 inch rear explosion-proof castor
12英寸后防爆脚轮

Specification :

- 1.This product is used for the elderly, the disabled and other people who cannot walk normally, especially suitable for walking up and down buildings, road obstacles and other environments, is an ideal walking tool for the elderly friends.
- 2.This machine adopts high power brushless motor, low noise and sufficient power.Equipped with the power type lithium battery, the battery life is strong, a single full charge can climb 40 floors below.
- 3.The backrest is foldable and easy to carry.
- 4.Wide range of application, high cost performance: this building climbing machine can meet the requirements of going up and down the building, crossing the roadblock, going out for a walk and play, and can be used in residential buildings, hospitals, nursing homes, stations and other occasions, and made of high-strength steel, surface paint treatment, beautiful, elegant, good strength.

产品说明:

- 1.本产品适用于老年人，残疾人及其他不能正常行走的人，特别适合上下建筑物，道路障碍物等环境行走，是老年人朋友的理想行走工具。
- 2，本机采用大功率无刷电机，噪音低，功率充足，配备动力型锂电池，电池寿命长，一次充满电可爬40层以下。
- 3.靠背可折叠，携带方便。
- 4，适用范围广，性价比高：该建筑爬坡机可满足上下楼，穿越路障，外出游玩的要求，可用于居民楼，医院，护理 房屋，车站等场合，并用高强度钢制成，表面烤漆处理，美观，高雅，强度好。



PRODUCT SPECIFICATION

MODEL: EA-5FPN

N.W:44KG	G.W: 59KG	Load-Bearing: 160KG
Front wheel size: 8 inches		Rear wheel size: 12 inches
Folding Size(L*W*H): 88.5x63x48.2cm		Open Size(L*W*H): 96x63x114cm
Packing Size: 94x70.5x49cm		Charger: 29.4V 3A
Battery: 24V 13Ah Lithium-Ion Battery		
Motor: 24V 200W brushless electric machine		
The thrust of the hand putter: 6000N		

产品描述

型号: EA-5FPN

净重: 44kg	毛重: 59kg	承重: 160kg
前轮尺寸: 8寸		后轮尺寸: 12寸
折叠尺寸: 88.5x63x48.2cm		展开尺寸: 96x63x114cm
包装尺寸: 94x70.5x49cm		充电器: 29.4V 3A
电池: 24V 13Ah锂离子电池		电机: 24V 200W无刷电机
推杆推力: 6000N		



EA-6G

Evacuation Chair 楼梯椅

PVC leather seat
PVC舒适座垫

Safety belt
安全带

Front handle (Optional)
前把手(选配)

Front wheel,
high wear-resisting
rubber wheels
前轮, 高耐磨橡胶轮

Rear handle (Optional)
后背拉手(选配)

Zipper of high quality, it is convenient to
detach and clean the pvc seat
高品质拉链, 方便拆卸和清洁PVC坐垫。

Rubber track
高质量履带

Track's folding&unfolding is
controlled by gas spring
履带的折叠和展开是由气压弹簧控制的

Rear wheel, steady for chair
后轮, 稳定椅身

OPTIONAL



Dust cover



Rear handle



Front handle



Wall bracket

Specification:

1. Standard model Evacuation Chair EA-6G, The evacuation stair chair designed to allow a safe controlled descent of an individual from unlimited stories.
2. With track, only one person can push down the stretcher.
3. It is made of high-strength powder-coated aluminum alloy, PVC seat.
4. Telescoping backrest.
5. Foldable, easy for storage.
6. 400 lbs pound weight capacity.
7. Safe, easy to open and super light weight only 19 lbs.
8. YOUR LOGO AVAILABLE.

Optional: Footrest; Mounting Wall Bracket; Dust Cover.

General Color: Cloth in black, and frame in yellow;
Different frame color, can be customized.

产品说明:

1. EA-6G 这个型号的疏散担架，其设计能够让人在可控制的安全范围内下楼梯。
2. 带有履带，只需一人就可将担架推下楼梯。
3. 椅子由高强度的铝合金制成，座垫PVC材质。
4. 靠背可伸缩。
5. 可折叠，便于储存。
6. 可承受400磅的重量。
7. 安全，易于打开，重量超轻仅为19磅。
8. 产品上可以添加您的LOGO。

可选配件: 踏板; 安装墙壁支架; 防尘罩。

一般颜色: 黑色布料，黄色框架；不同的框架颜色，可以定制。

PRODUCT SPECIFICATION

MODEL: EA-6G

OPEN SIZE: 72x52x137cm		FOLDED: 52x16x100cm
Selft weight: 11kg	loading: 160kg	Package: 52x109x19cm
Front wheel dia: 15cm	G.W.: 13kg	Back wheel dia: 5cm

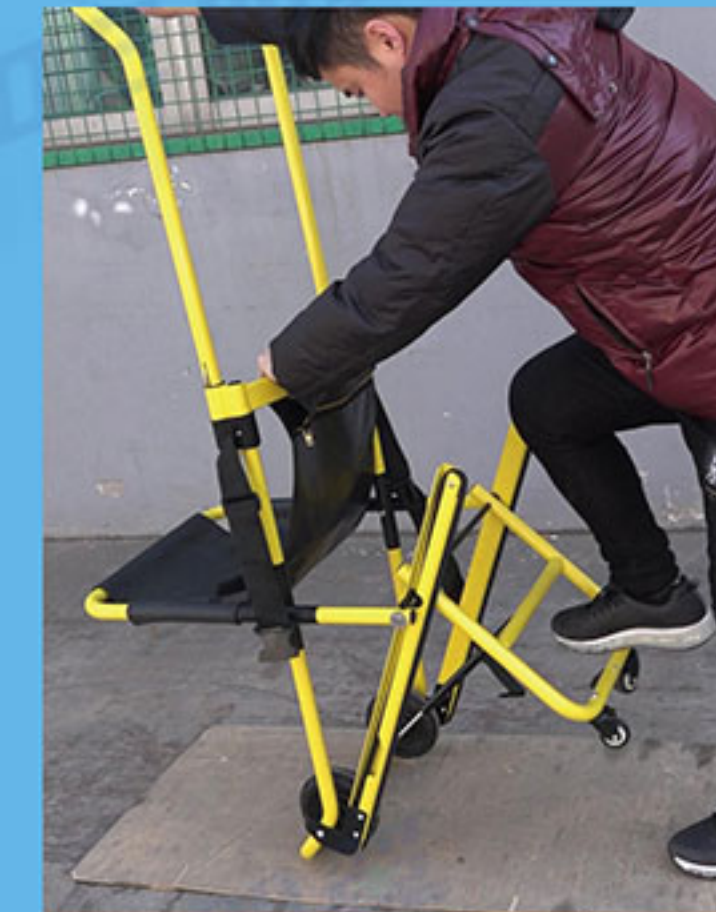
产品描述

型号: EA-6G

展开尺寸: 72x52x137cm		折叠尺寸: 52x16x100cm
自重: 11kg	承重: 160kg	包装尺寸: 52x109x19cm
前轮直径: 15cm	毛重: 13kg	后轮直径: 5cm



With track, only one person can push down the stretcher.
带有履带，只需一人就可将担架推下楼梯。



Rack open&fold is controlled by gas spring, hold the rear handle, one leg step, fold the track.
仅需扶住椅子，用脚轻踩，履带便可收起。



Foldable, easy for storage. super light weight only 19 lbs.
可折叠，便于储存。重量超轻仅为19磅。

EA-6F

Evacuation Chair 楼梯椅



PVC seat
PVC 舒适坐垫

Metal bucket and safety belt
金属扣和安全带



Stretchable 3 positions handles
可拉伸的3档调节手柄



With track, only one person
can push down the stretcher.
带有履带，
只需一人就可将担架推下楼梯



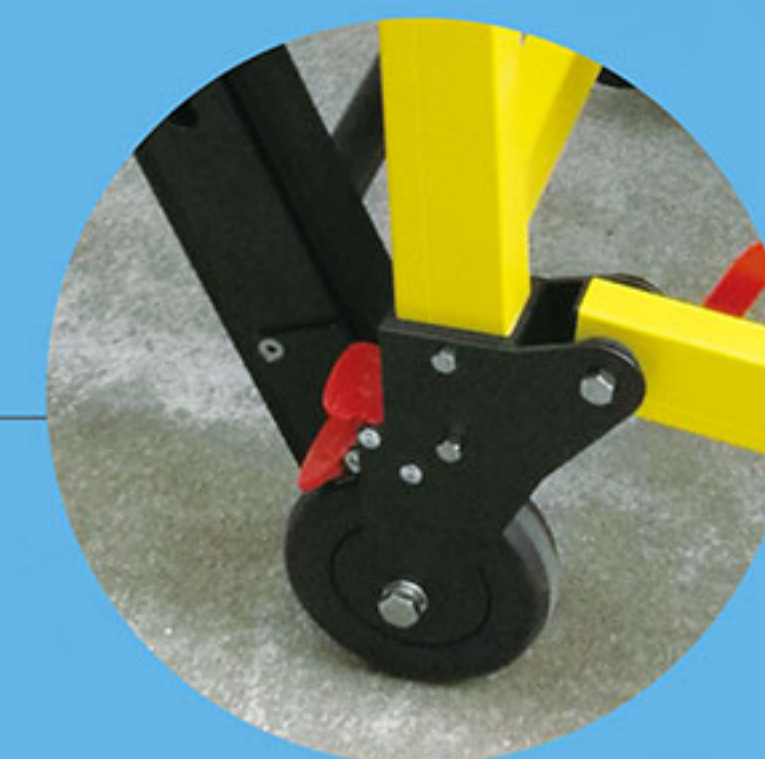
Backrest height adjustable,
total 4 positions
靠背可分四档调节



Rear handle autolock
后手把带自动锁



Rack fold & unfold is controlled by gas spring,
hold the rear handle, one leg step, fold the track
仅需扶住椅子，用脚轻踩，履带便可收起



High wear-resisting rubber wheels
高耐磨橡胶轮

COLOR



Red

Blue

Yellow

Green

OPTIONAL



Dust cover



Pillow



Wall bracket

Specification:

It is designed to assist in evacuating individuals easily, safely and quickly from multi-leveled buildings. The innovative sliding system make it easy to operate. With 2 METAL belts provides the security during transportation. All Metal Frame Construction provides strength, long service life, and exceptional performance with heavy patients.

WANROOEMED Evacuation chair with following features:

1. The sliding tracks adjustable: users can adjust the tightness.
2. Wide tracks for safer and easier operation during evacuation.
3. Designed with special track structure, more convenient and safer for transport.
4. Two rear lift handles.
5. Rear castors with brakes.

Optional : Mounting Wall Bracket ; Dust Cover ; Pillow.

General Color : Frame in yellow, cloth in black. Customized color available.

PRODUCT SPECIFICATION

MODEL: EA-6F

Open Size(L × W × H): 98x54x80cm		Folded Size(L × W × H): 98x54x35cm	
Selft weight:15kg	Load Limit:159kg	Package:110x52x27cm	G.W.: 17kg
Track: High wear-resistant materials, life time 3~5 years			

产品描述

型号: EA-6F

展开尺寸: 98x54x80cm		折叠尺寸: 98x54x35cm	
自重: 15kg	承重: 159kg	包装尺寸:110x52x27cm	毛重: 13kg
履带: 高耐磨材料, 使用寿命3~5年			

产品说明:

本产品旨在帮助行动不便的人员从多层建筑物中, 轻松, 安全, 快速地撤离。创新的滑动系统使本产品更容易操作。2条金属带在运输过程中提供了安全保障。全金属框架结构, 强度高, 使用寿命长, 拥有运输肥胖型病人的卓越性能。

万容医疗疏散椅具有以下特点:

- 1、滑动履带可调: 使用者可调节松紧度。
- 2、超宽的履带使得疏散过程中操作更安全和更容易。
- 3、采用特殊的轨道结构设计, 运输更方便, 更安全。
- 4、两个后把手。
- 5、带刹车的后脚轮。

可选配件: 安装墙壁支架; 防尘罩; 枕头。

一般颜色: 黄色框架, 黑色布料。可定制颜色。