

US370

FULL-DIGITAL TROLLEY ULTRASOUND DIAGNOSTIC SYSTEM



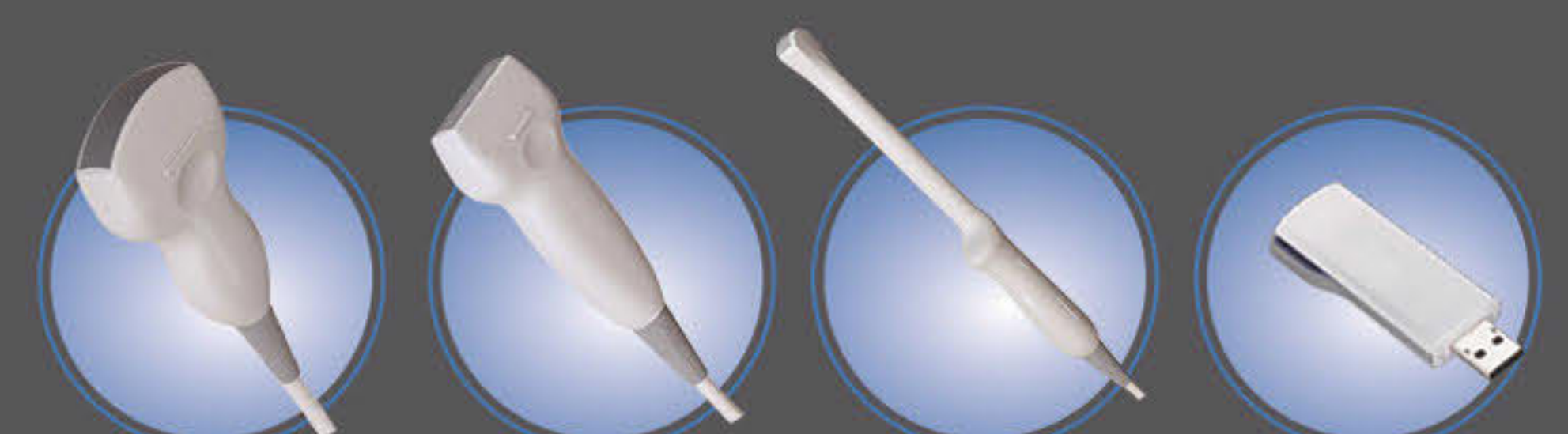
■ Ergonomics

- High-resolution 15-inch LCD monitor with wide angle view
- User- friendly control panel
- Maximum three transducer connectors
- Logically designed user-centric control panel with intuitive menu adjustment control and functional

Rich features

- Sharper & Continuous Edges
- Smooth Uniform Tissues
- Cleaner 'no echo areas'
- High-capacity Cine loop
- Support various pseudo-color
- Efficient data management system
- USB interface for real-time image storage
- Support image and text printing
- A wide range of clinical applications

■ Probes



Purified Harmonic Imaging for better contrast resolution providing clearer images with excellent resolution and less noise.
THI and Histogram function
Measurement: General measurement, GYN & OB measurement package, Andrology measurement , Cardiac measurement